

TWIN PEAKS

WOW

TWIN PEAKS

Design dialogue between volumes and chromatic elections as a common thread, with a contemporary and cosmopolitan feel.

There are no longer any constraints to the customer's imagination.

This is the beginning of a story made of stunning and extraordinary unique spaces.

Where well being joins design.

-

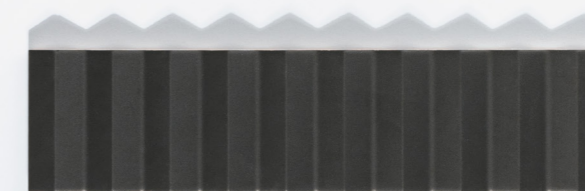
Diálogo de diseño entre volúmenes y elecciones cromáticas como hilo conductor, con un toque contemporáneo y cosmopolita.

Ya no hay restricciones para la imaginación.

Este es el principio de una historia compuesta por espacios extraordinariamente únicos.

Donde el bienestar se une con el diseño.

01. SIZES, COLOURS AND FINISHES / FORMATOS, COLORES Y ACABADOS	<i>pag. 4</i>
02. GET INSPIRED / INSPIRATE	<i>pag. 6</i>
03. LAYOUTS / COLOCACIONES	<i>pag. 26</i>
04. TECHNICAL FEATURES / CARACTERÍSTICAS TÉCNICAS	<i>pag. 32</i>
05. PACKING	<i>pag. 33</i>
06. PRICE CODE CÓDIGO DE TARIFA	<i>pag. 33</i>
07. TECHNICAL DRAWINGS / DIBUJOS TÉCNICOS	<i>pag. 34</i>
08. RECOMMENDATIONS / RECOMENDACIONES	<i>pag. 35</i>



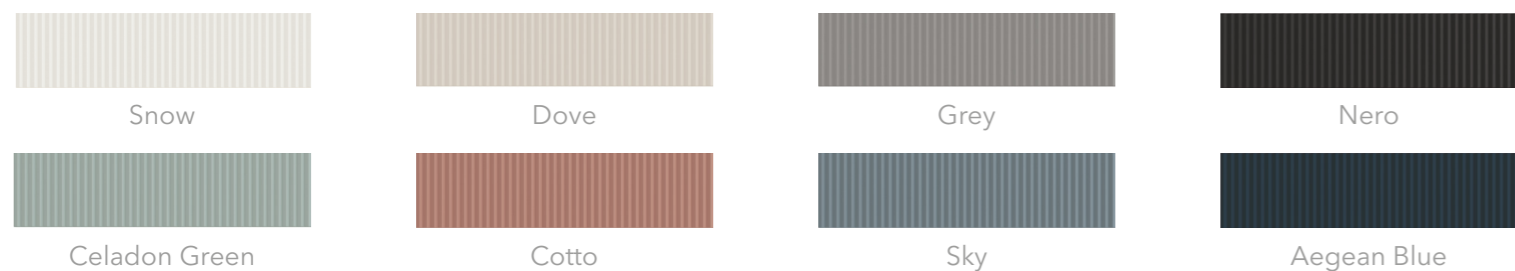
TWIN PEAKS



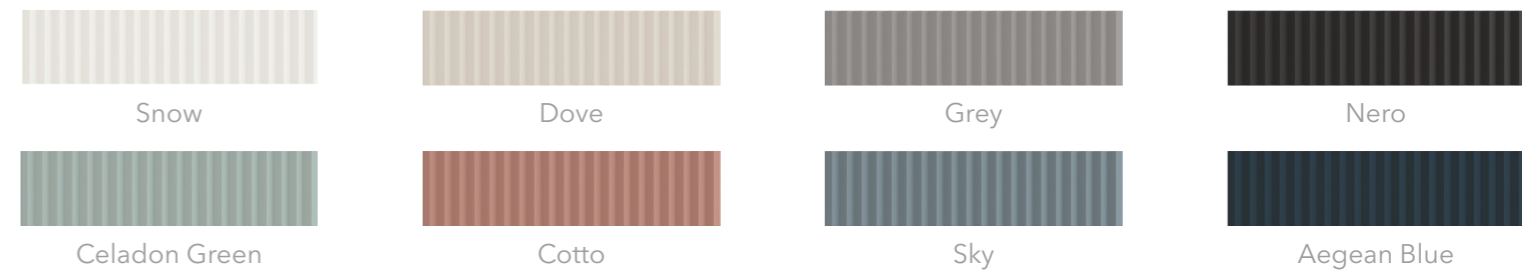
LISO XL 7,5X30 cm / 3"x12"



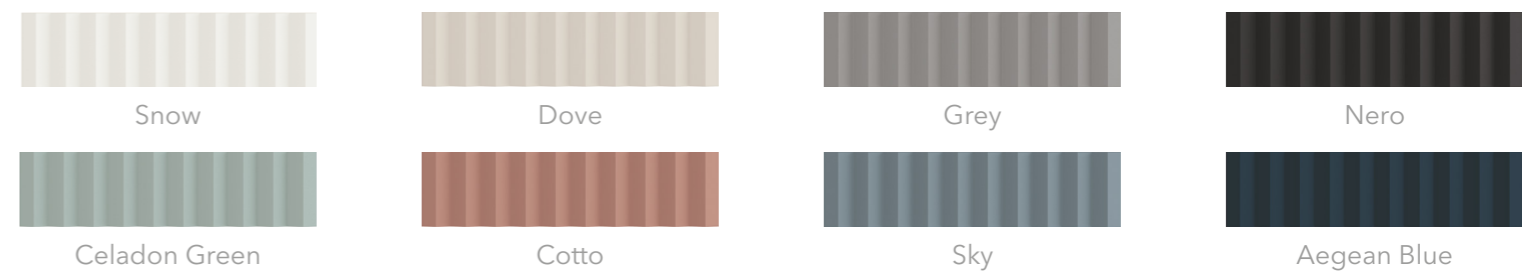
TP LOW 7,5X30 cm / 3"x12"



TP MED 7,5X30 cm / 3"x12"



TP UP 7,5X30 cm / 3"x12"



TP EDGE XL 0,8X30 cm / 0.3"x12"



All colours

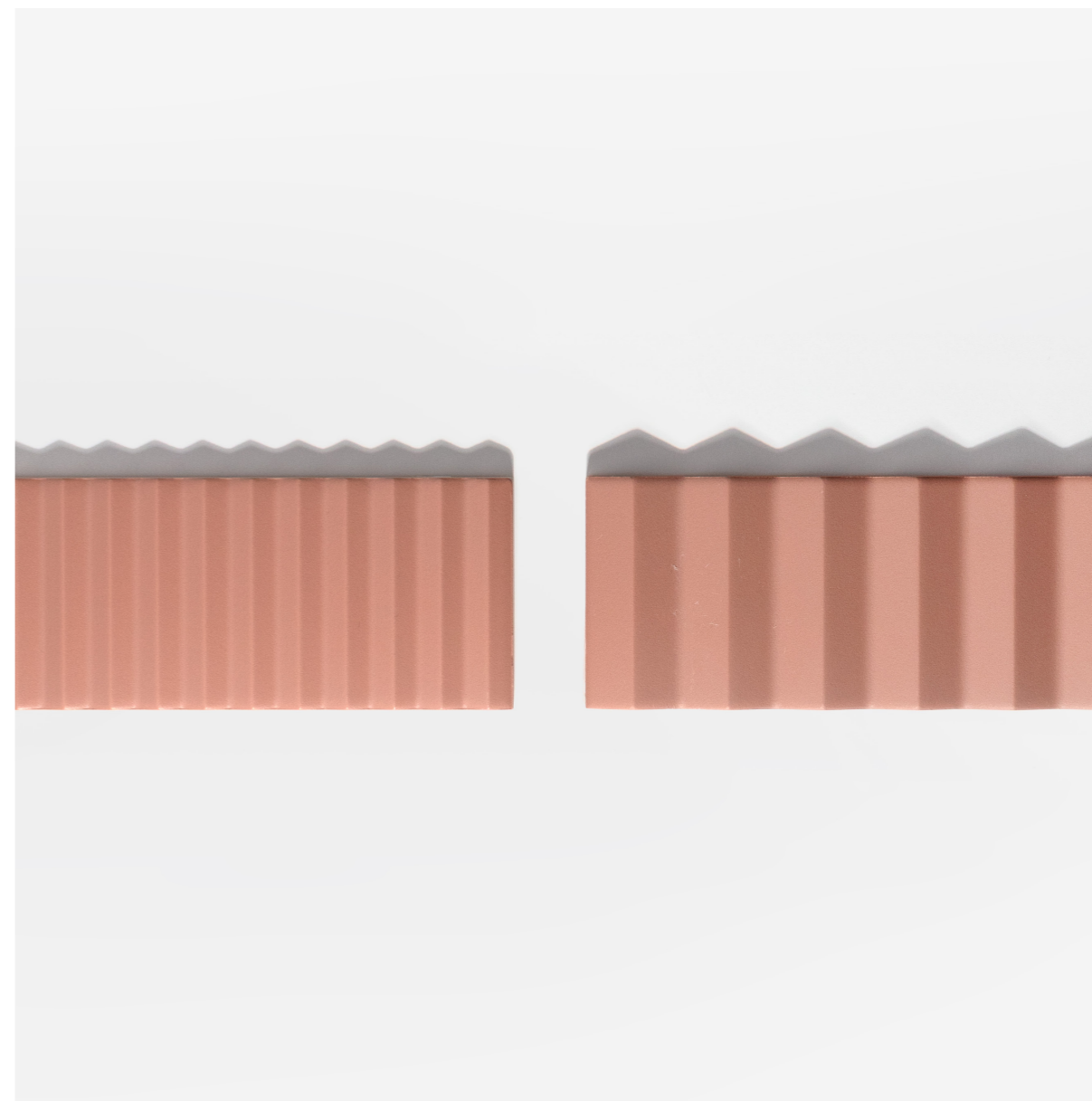


TP Up Aegean Blue
TP Med Aegean Blue

TP Up Snow ▶
TP Med Snow
TP Low Grey

Floor Tiles: **Contempo Strip** Oak (Love Affairs Collection)





- ◀ **TP Up** Cotto
- TP Med** Cotto
- Liso XL** Snow

Floor Tiles: **Suit** Grana (Tesserae Collection)



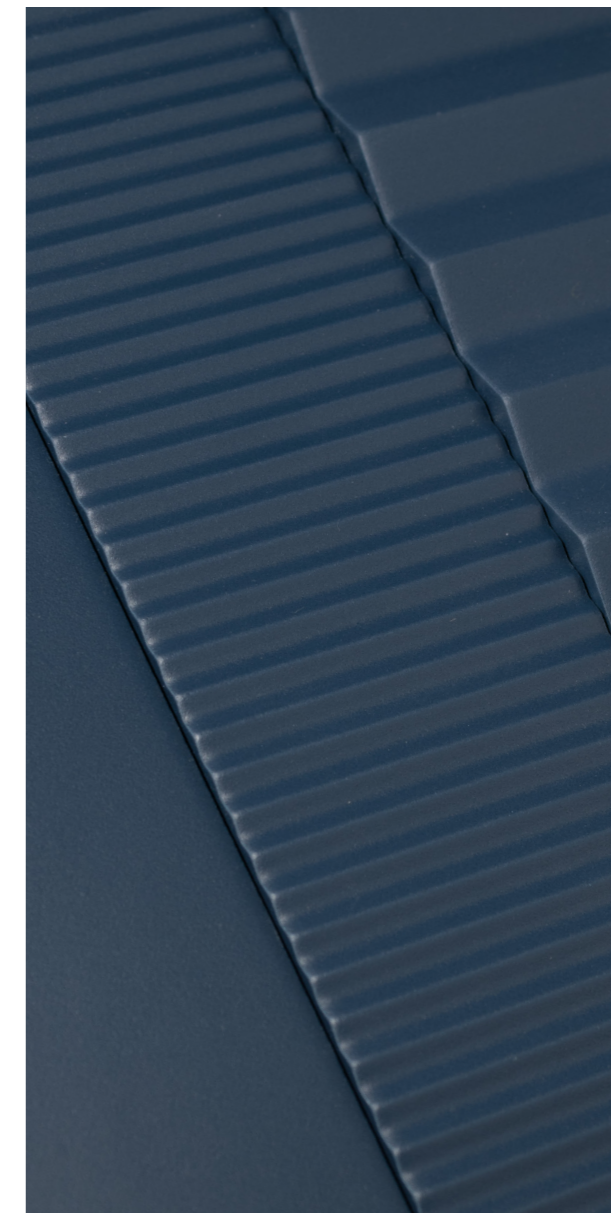
TP Low Snow & Sky

Floor Tiles: **Lines M** Chalk (Raster collection)

TP Up Sky
TP Med Sky
TP Low Sky
Liso XL Sky

Floor Tiles: **Color Drops** Off White (Drops collection)





- ◀ **TP Up** Aegean Blue
- TP Low** Aegean Blue
- Liso XL** Aegean Blue

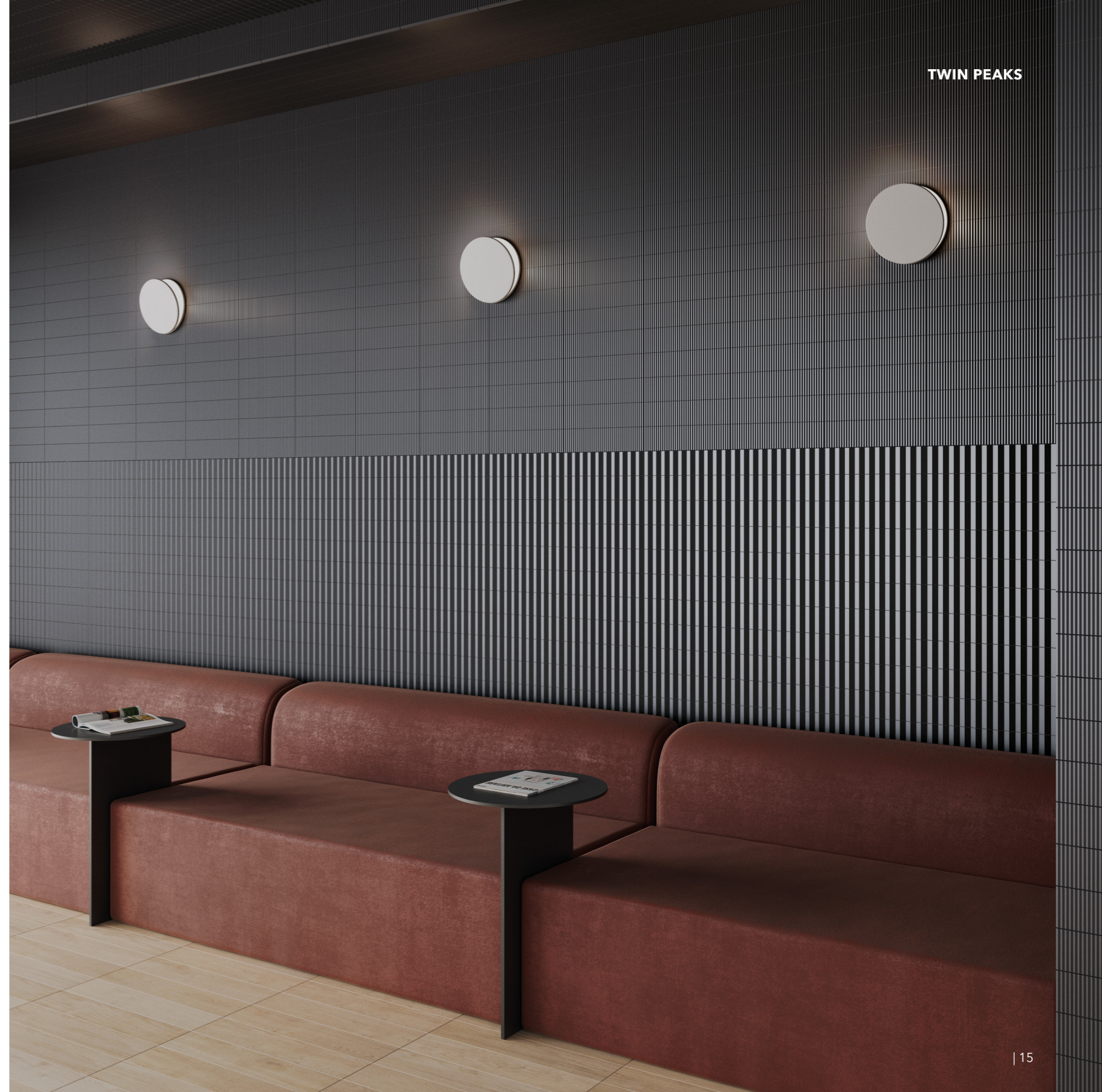
Floor Tiles: **Color Drops** Off White (Drops collection)

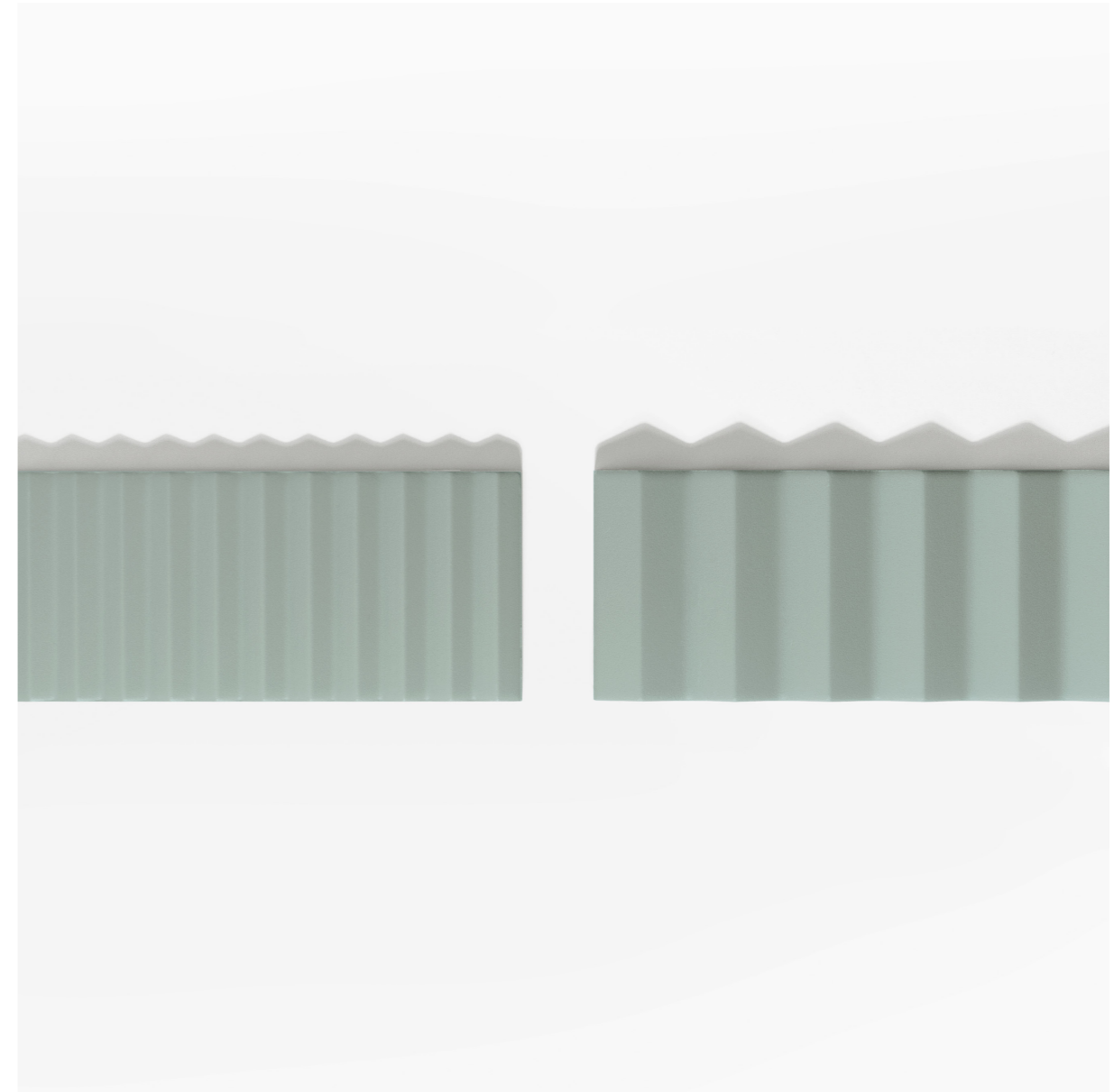


TP Up Dove
 TP Med Dove
 Liso XL Dove

TP Up Nero ▶
 TP Low Nero

Floor Tiles: **Contempo Strip** Oak (Love Affairs collection)





◀ **TP Up** Celadon Green
TP Med Celadon Green



TP Up Grey
Liso XL Grey

TP Up Nero ▶
TP Med Nero





- ◀ **TP Up** Dove
- TP Low** Dove
- Liso XL** Dove & Nero
- TP Edge XL** Nero

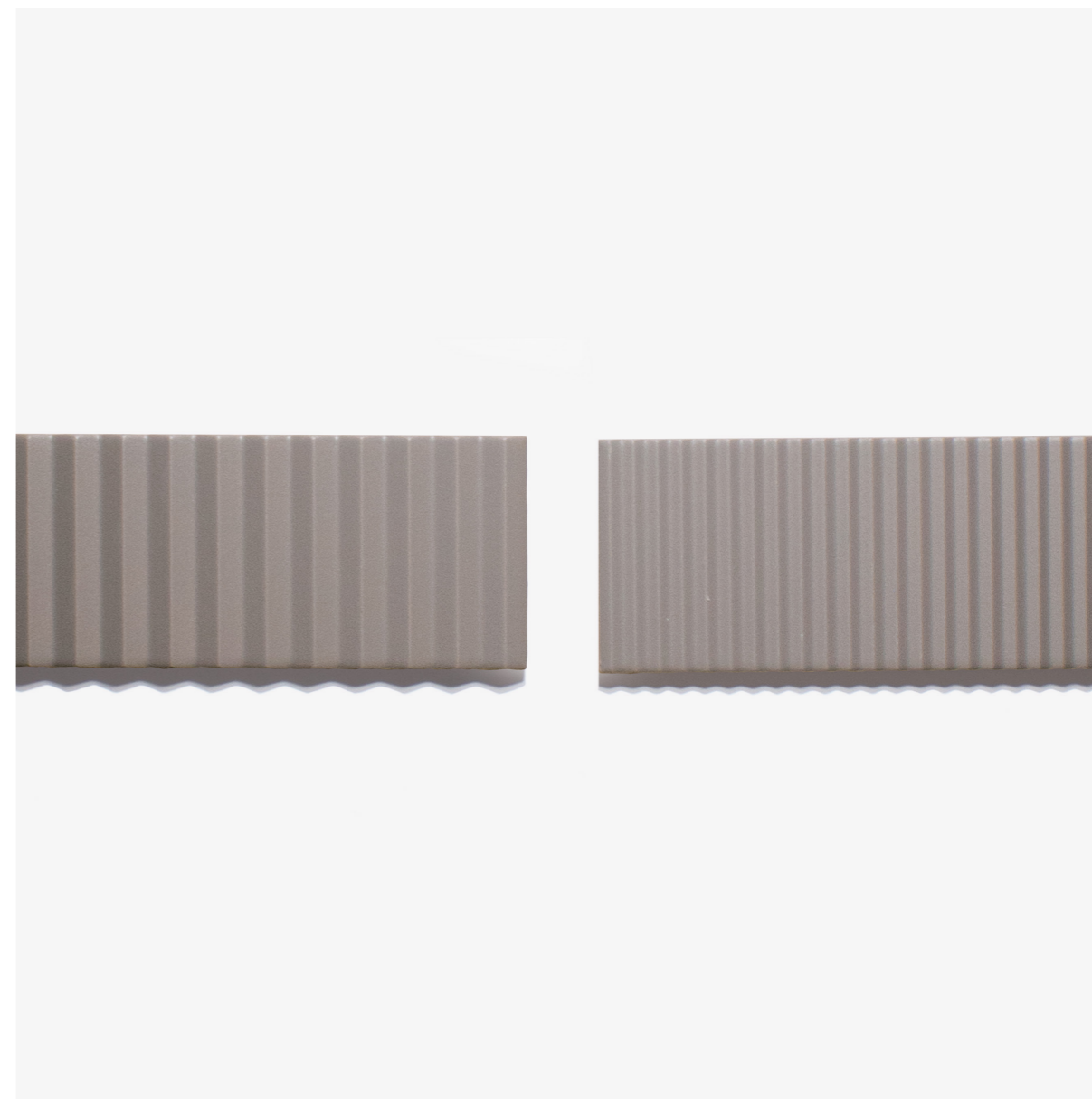


TP Low Cotto
Liso XL Cotto & Snow

Floor Tiles: **Concrete Strip** Ash Grey (Love Affairs collection)

Liso XL Celadon Green ▶
TP Up Celadon Green
TP Med Celadon Green
TP Low Celadon Green





TP Med Grey
TP Low Grey
◀ Liso XL Snow

Floor Tiles: **Solid XL** Chalk (Solid collection)

RECOMMENDATIONS

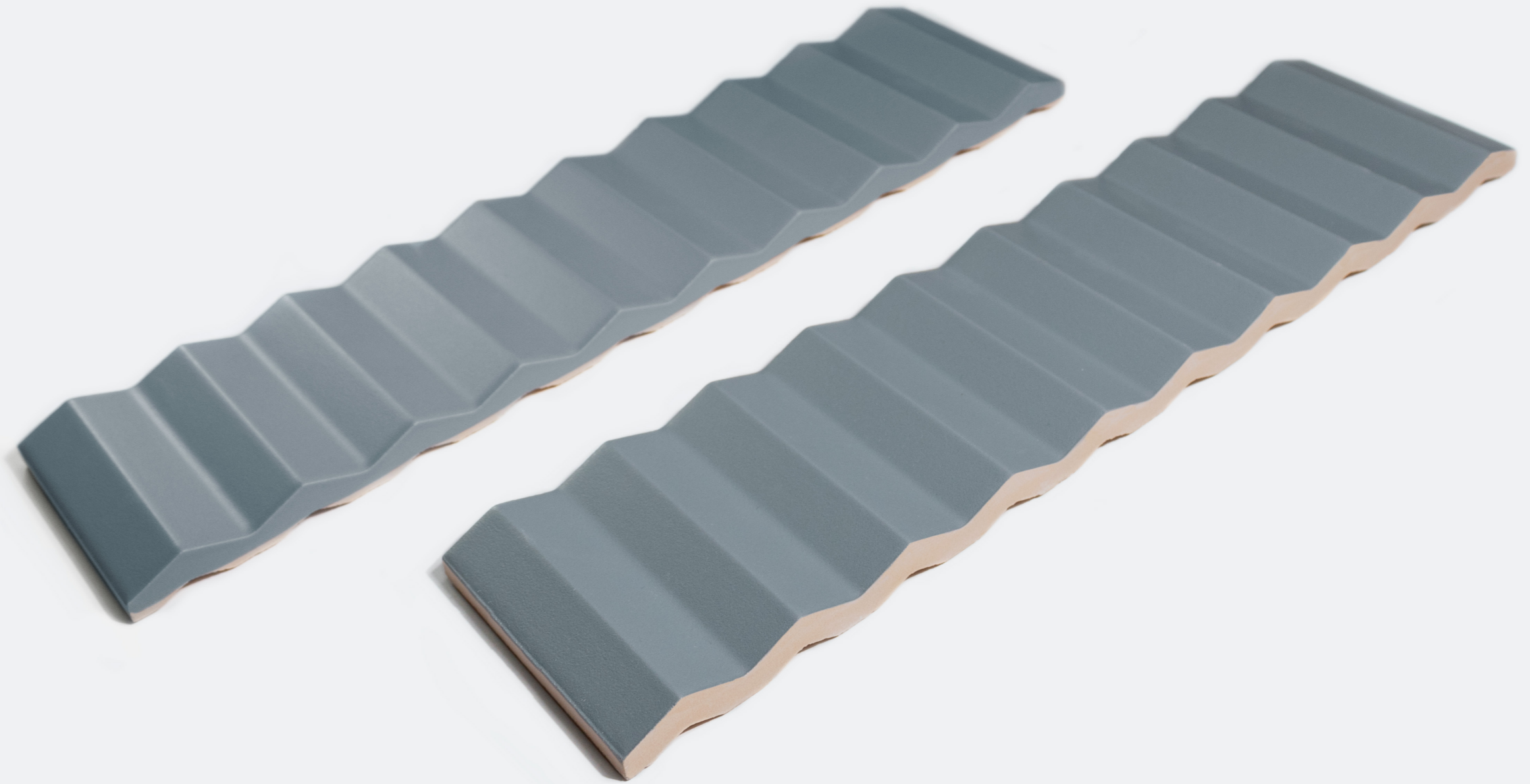
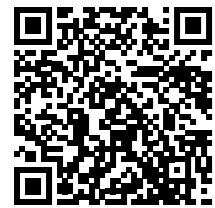
All Twin Peak pieces have a side glazed, allowing to combine in the same installation the four different height reliefs LISO XL, LOW, MED and UP .

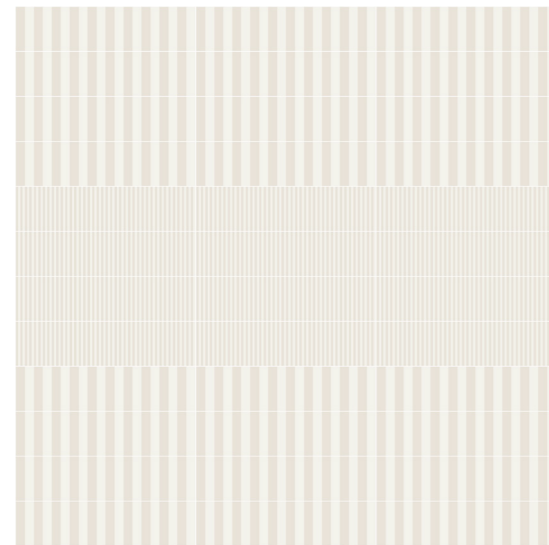
Capture the following QR code to watch the installation tips:

RECOMENDACIONES

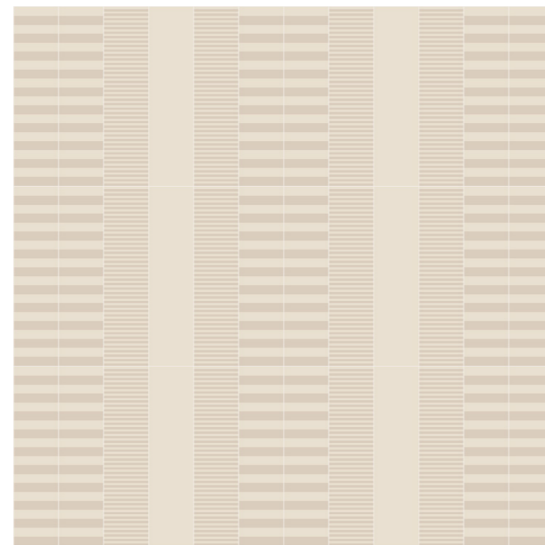
Todas las piezas de Twin Peaks tienen uno de los lados esmaltado, lo que permite combinar en una misma pared los diferentes relieves: LISO XL, LOW, MED y UP.

Captura el siguiente QR para ver los consejos de instalación:

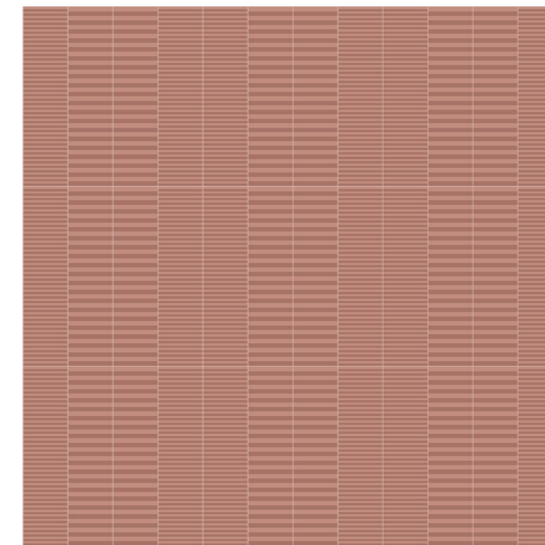




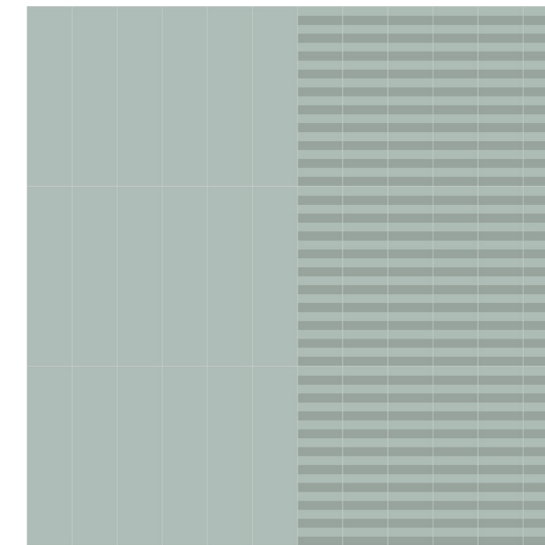
TP Low & TP Up Snow



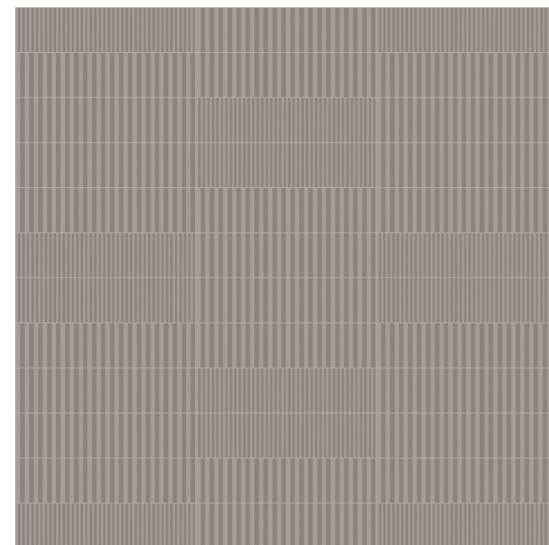
TP Liso XL, TP Low & TP Up Dove



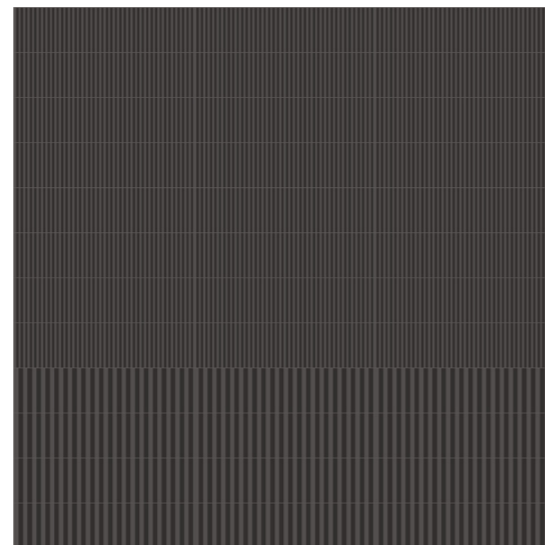
TP Low & TP Up Cotto



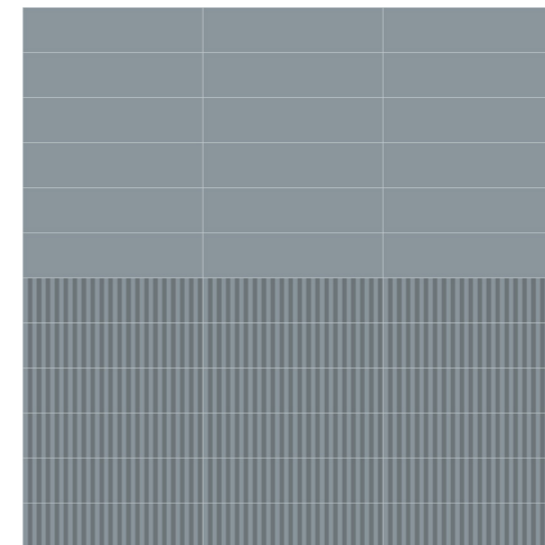
TP Liso XL & TP Up Celadon Green



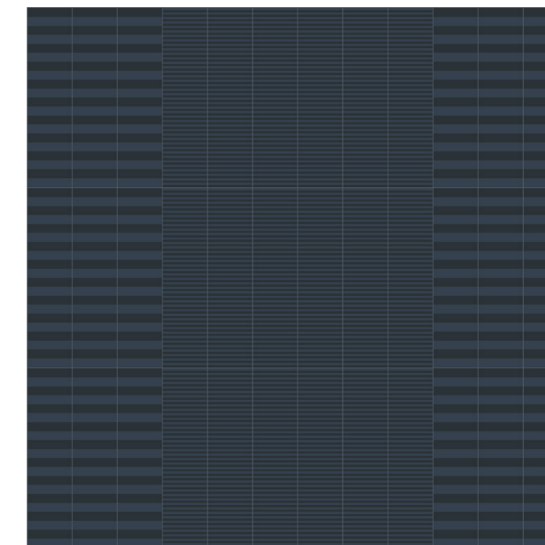
TP Low & TP Med Grey



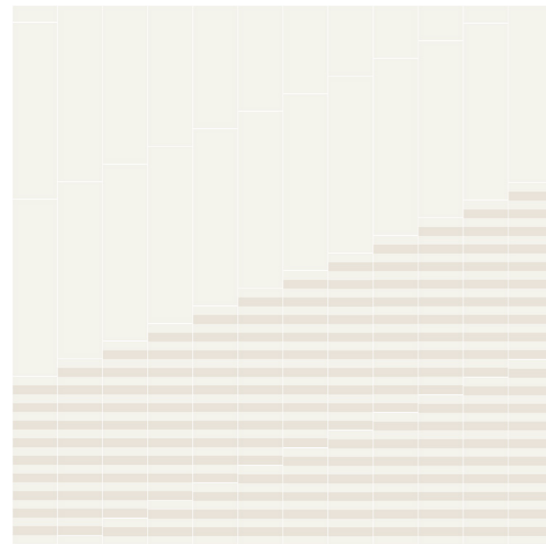
TP Low & TP Med Nero



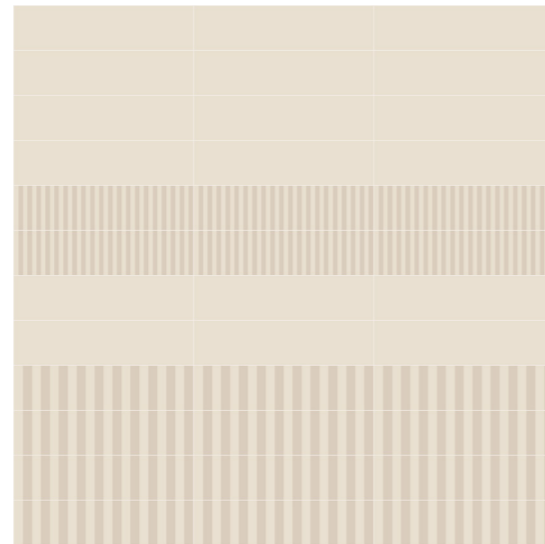
TP Liso XL & TP Up Sky



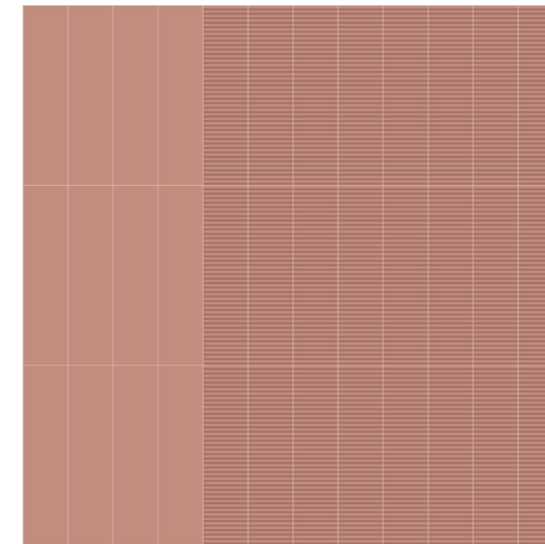
TP Low & TP Up Aegean Blue



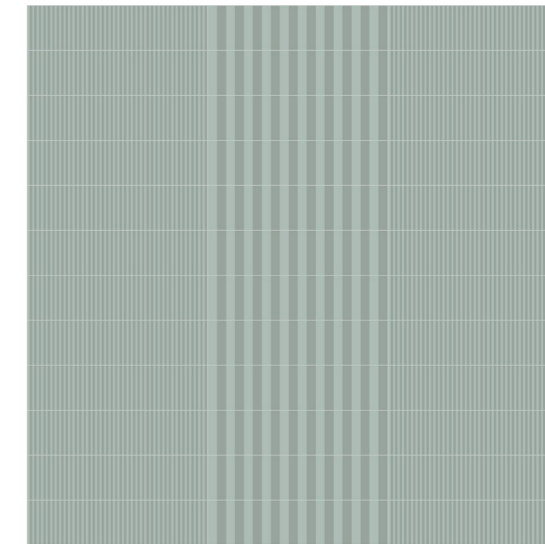
TP Liso XL & TP Up Snow



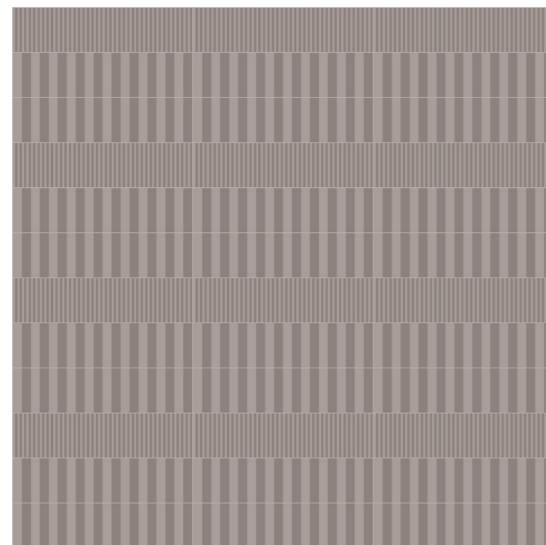
TP Liso XL, TP Med & TP Up Dove



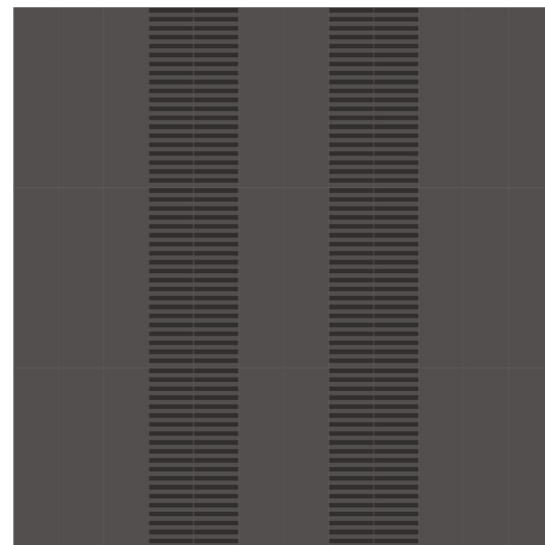
TP Liso XL & TP Low Cotto



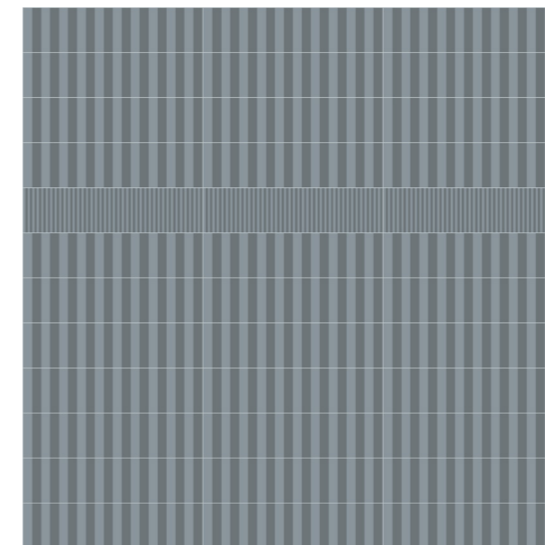
TP Low & TP Up Celadon Green



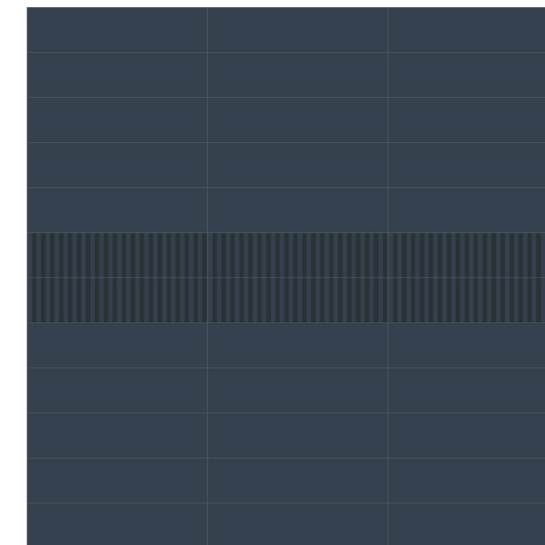
TP Low & TP Up Grey











TP Liso XL & TP Up Nero









TP Low & TP Up Sky



TP Liso XL & TP Med Aegean Blue

Technical features for Dry-Pressed ceramic tiles with water absorption BIII (Eb >10%) Características técnicas para las baldosas cerámicas prensadas en seco del grupo BIII (Eb >10%)		
FEATURES / CARACTERÍSTICAS	SPECIFICATION / ESPECIFICACIÓN	NORMA
 Dimensional Features	74,5 mm +/- 0,75 mm % x 299,5 mm +/- 0,5 %	UNE-EN ISO 10545-2:1998
 Water absorption	>10%	UNE-EN ISO 10545-3:1997
 Modulus of rupture and breaking strength	Thickness ≥ 7,5 mm mínimo 12 N/mm ² Thickness < 7,5 mm mínimo 15 N/mm ²	UNE-EN ISO 10545-4:2012
 Crazing resistance	Pass	UNE-EN ISO 10545-11:1997
 Household products resistance	GA	UNE-EN ISO 10545-13:1998
 Chemical resistance	GHA	UNE-EN ISO 10545-13:1998
 Stain resistance	5	UNE-EN ISO 10545-14:1998
 White Body	-	

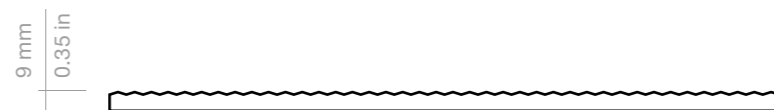
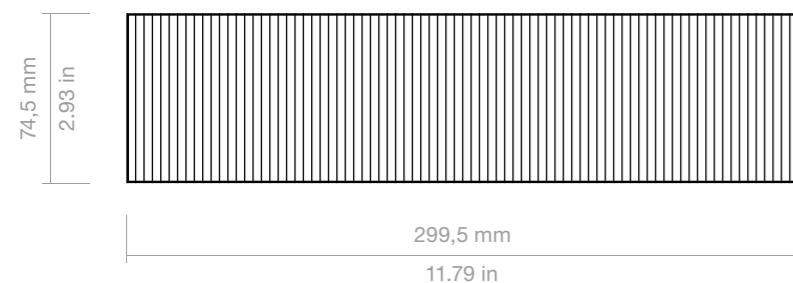
			KG 	M2 		M2 
Modelo	Formato (cm)	Piezas / Caja	Kg / Caja	m2 / Caja	Cajas / Palet	m2 / Palet
LISO XL	7,5x30 cm	23	7,519 kg	0,511 m ²	132	67,452 m ²
TP LOW	7,5x30 cm	22	7,000 kg	0,488 m ²	132	64,416 m ²
TP MED	7,5x30 cm	19	6,230 kg	0,422 m ²	132	55,704 m ²
TP UP	7,5x30 cm	15	5,500 kg	0,333 m ²	132	43,956 m ²
TP EDGE XL	0,8x30	10	3,094 kg	3,00 m	230	690 m

			LB 	FT2 		FT2 
Model	Format (in)	Pieces / Box	Lb/ box	sq ft / Box	Boxes / Pallet	sq ft / Pallet
LISO XL	3"x12"	23	16.577 lb	5.500 ft ²	132	726 ft ²
TP LOW	3"x12"	22	15.432 lb	5.256 ft ²	132	693.792 ft ²
TP MED	3"x12"	19	13.735 lb	4.542 ft ²	132	599.544 ft ²
TP UP	3"x12"	15	12.125 lb	3.584 ft ²	132	473.088 ft ²
TP EDGE XL	0.3"x12"	10	0.869 lb	9.843 ft	230	2,263.89 ft

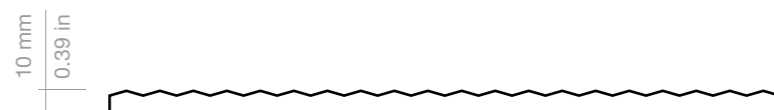
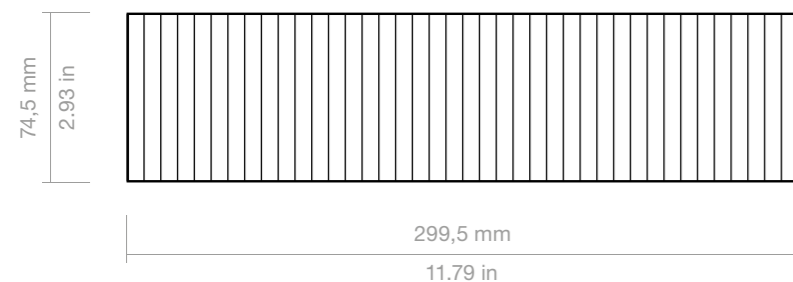
Price code - Código de tarifa

MODEL / MODELO	PRICE CODE / CODIGO TARIFA
LISO XL	W14
TP LOW	W21
TP MED	W21
TP UP	W21
TP EDGE XL	WS3

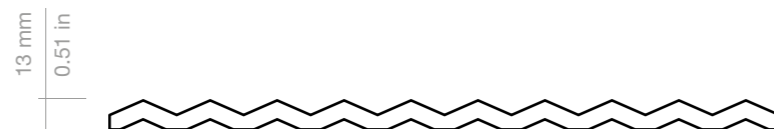
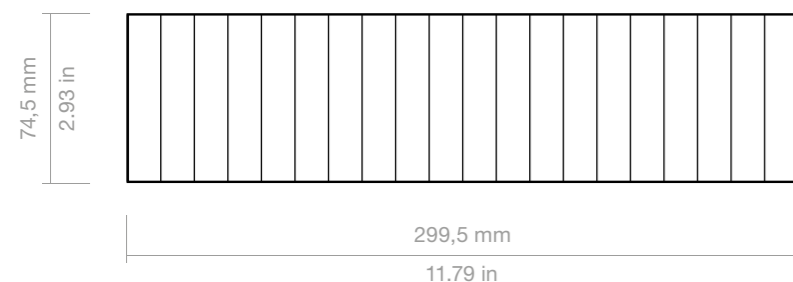
TP LOW



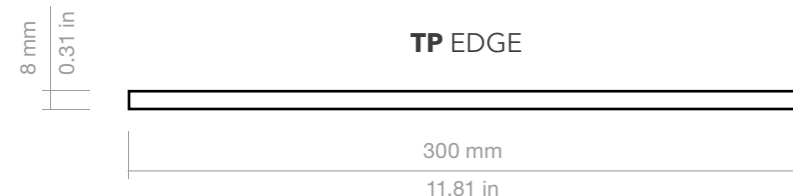
TP MED



TP UP



TP EDGE



BEFORE INSTALLING THE PRODUCT

The surface where the product is being installed must be clean and level. It is recommended that the layout of the product is prepared before the final installation. Make sure you choose an adhesive apt for the area where the product is being installed. For installation on porous surfaces we recommend: Kerakoll Special® Eco, and for Non-porous surfaces: Kerakoll serie H40® Eco.

The choice of quality grouting mortar is crucial. We recommend Kerakoll Fugabella® Color. (www.kerakoll.com)

TO ENHANCE YOUR WOW PRODUCT

In order to obtain the maximum WOW effect, use 1 mm - 0.039 in spacers between the tiles to maintain an even installation over the whole surface. The colour of the grout should be as close as possible to the colour of your product. Once the area has been grouted, and before the grout dries, remove any excess material with a damp sponge.

MAINTENANCE

Maintenance free. Easy and practical to care for, due to the high standard of technical characteristics in each WOW ceramic product. Avoid abrasive or acidic cleaning products. It is recommended to clean with clear water.

RECOMMENDATIONS

All Twin Peak pieces have a side glazed, allowing to combine in the same installation the four different height reliefs LISO XL, LOW, MED and UP .

Capture the QR code (page 26) to watch the installation tips:

ANTES DE LA COLOCACIÓN

Preparar la superficie sobre la que se va a colocar tu producto WOW. Debe estar limpia y aplomada. Se recomienda plantear la colocación, previo a su instalación. Elegir el material de agarre en función de las características de la superficie. Se recomienda para colocación general en superficies porosas: Kerakoll special® Eco. y para superficies no porosas como el pladur: kerakoll serie H40® Eco.

Es importante la elección de un material de rejunte de calidad. WOW recomienda utilizar el material de rejunte Kerakoll fugabella® Color (www.kerakoll.com)

PARA ENSALZAR EL ASPECTO DE TU PRODUCTO WOW

Se recomiendan separadores de 1 mm para colocar las piezas y conseguir de esta forma un aspecto WOW óptimo. También es aconsejable que el color de rejuntado sea similar al color del producto elegido. Una vez rejuntado el producto, y antes de que se endurezca, retirar el material sobrante de rejuntado con una esponja mojada en agua.

MANTENIMIENTO

Práctico y sencillo de limpiar, dadas las excelentes características técnicas del producto WOW, tan sólo es necesario un cuidado rutinario, evitando la utilización de productos abrasivos o ácidos. Se recomienda limpiar exclusivamente con agua limpia.

RECOMENDACIONES

Todas las piezas de Twin Peaks tienen uno de los lado esmaltado, lo que permite combinar en una misma pared los diferentes relieves: LISO XL, LOW, MED y UP.

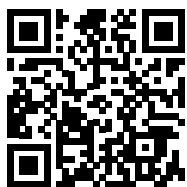
Captura el QR (página 26) para ver los consejos de instalación:

Designed by



Polígono Pont, Avda. de España 114
12180 Cabanes,
Castellón (Spain)
t. +34 964 331 910 / f. +34 964 331 911

www.wowdesigneu.com
comercial@wowdesigneu.com



©2023 Tendencias Cerámicas
WOW, registered trademark of Tendencias Cerámicas, S.L.

The brand use or reproduction of the contents of this catalog, is protected by copyright law. Any use of the brand or reproduction thereof, in part or total, must be authorized by Tendencias Cerámicas, S.L. Otherwise, this action can be sanctioned according to the Law.

©2023 Tendencias Cerámicas
WOW, marca registrada por Tendencias Cerámicas, S.L.

La utilización de la marca o la reproducción del contenido de este catálogo está protegida por la Ley de Propiedad Intelectual. Cualquier uso de la marca o la reproducción del mismo, en parte o en su totalidad, debe ser autorizada por Tendencias Cerámicas, S.L., pudiendo, en caso contrario, ser esta acción sancionada de acuerdo con la Ley.

WOW reserves the right to modify and/or discontinue certain models displayed in this catalogue.
The colour of the pieces displayed herein may differ slightly from originals.
The settings shown in this catalogue are design proposals for advertising purposes.
In real situations in which the pieces are laid, the installation instructions published by WOW should be followed.

WOW se reserva el derecho de modificar y/o suprimir ciertos modelos expuestos en este catálogo sin previo aviso.
Los colores de las piezas pueden presentar ligeras diferencias respecto a las originales.
Los ambientes que se muestran en este catálogo son sugerencias decorativas de carácter publicitario, debiéndose utilizar en la instalación real las instrucciones de colocación editadas por WOW.





WOW

www.wowdesigneu.com