

TUXEDO PARK

Tuxedo Park Jazz Glass mosaics create a beautiful mélange of contrasting stained glass tones in a mini elongated hexagon. The mosaics are crafted by hand and placed onto interlocking sheets for easy installation and a seamless effect. Stocked in three tasteful Jazz Glass colorways, Tuxedo Park pairs elegantly with Tambourine Traps in matching colorways, and is also available in stone!



PICTURED: TUXEDOPARK BUGLE BLUE BLEND WITH DENIM JAZZ GLASS FIELD TILE

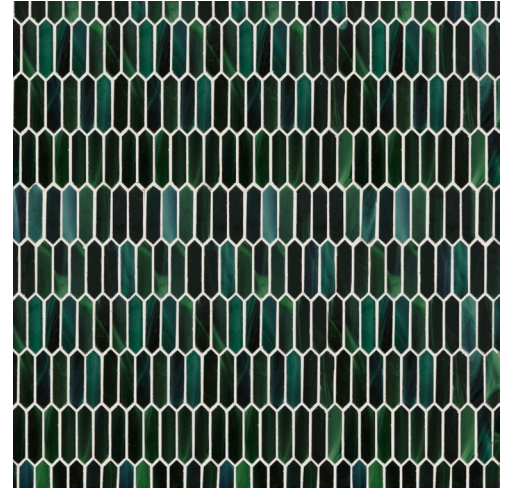
TUXEDO PARK



Watercolor White Blend
Gloss



Bugle Blue Blend
Gloss

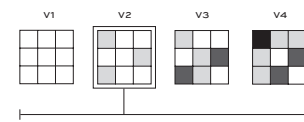


Gillespie Green Blend
Gloss

APPLICATIONS

INTERIOR FLOOR	INTERIOR WALL	SHOWER WALL	SHOWER FLOOR	EXTERIOR FLOOR	EXTERIOR WALL	POOL/ FOUNTAIN	COUNTER TOP	FIREPLACE SURROUND
Light Traffic Residential	All	Yes, including steam	Yes	No	Yes	No	No	Yes

VARIATION



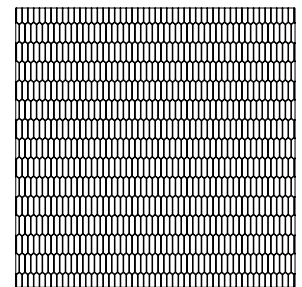
INSTALLATION/MAINTENANCE

SETTING MATERIAL	GROUT	GROUT JOINT	MEMBRANE	CAULK	SEALER	CLEANER	INSTALLATION INSTRUCTIONS	LAYOUT	DRY LAYOUT
Mapei Adesilex P10/Keraply White ¹	Ardex FG-C Microtec Unsanded ²	As established on sheets	Mapei Mapelastix AquaDefense	Mapei Keracaulk Unsanded	Not Required	AquaMix Concentrated Stone & Tile Cleaner	A.T. Guidelines	No	Required

NOTES

- ¹ Alternate mortar - Ardex X77 White, Mapei Granirapid White or Mapei Kerabond/Keralastic White
Ardex X77 White - Not suitable for metallic colorways or submerged applications
- ² Alternate grout - Mapei Ultracolor Plus or Mapei Keracolor Unsanded
- Tech Note: Grout joint between mosaic sheets should be the same as joints within the sheets. Particular attention should be paid to the joints between sheets - adjusting individual pieces if necessary to produce a 'seamless' installation. Final appearance of installation will be influenced by choice of grout color. Mockup to confirm grout color selection highly recommended.

MOSAIC



(0.92 sf/unit)
MESH MOUNTED INTERLOCKING SHEET
10 13/16" x 12 1/4" x 1/8"
CONCEPT BOARD
20" x 20" x 3/8"