

# ADENA *by* LORI WEITZNER

---

Adena reimagines Lori Weitzner's luxurious Adelaide embroidery pattern in micro-mosaic stone. Tiny tumbled pieces of stone are set into an ombre pattern inside of intricately scalloped marble frames. The result is a beautifully arched, textured, & timeless arabesque in three tranquil colorways: Blue, crafted from Bardiglio Nuvolato, Azul Cielo, and White Sand; Cream, with White Sand, Pink, and Thassos marbles; and Grey, combining Smoke limestone, Botticino, and White Sand.

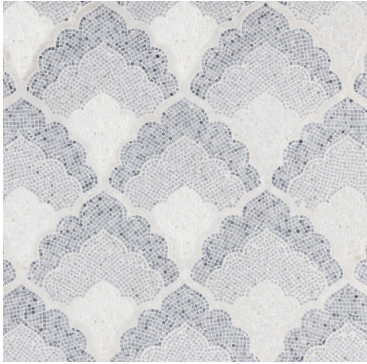


Ceramic Matrix

An Architectural Surfaces Company



# ADENA



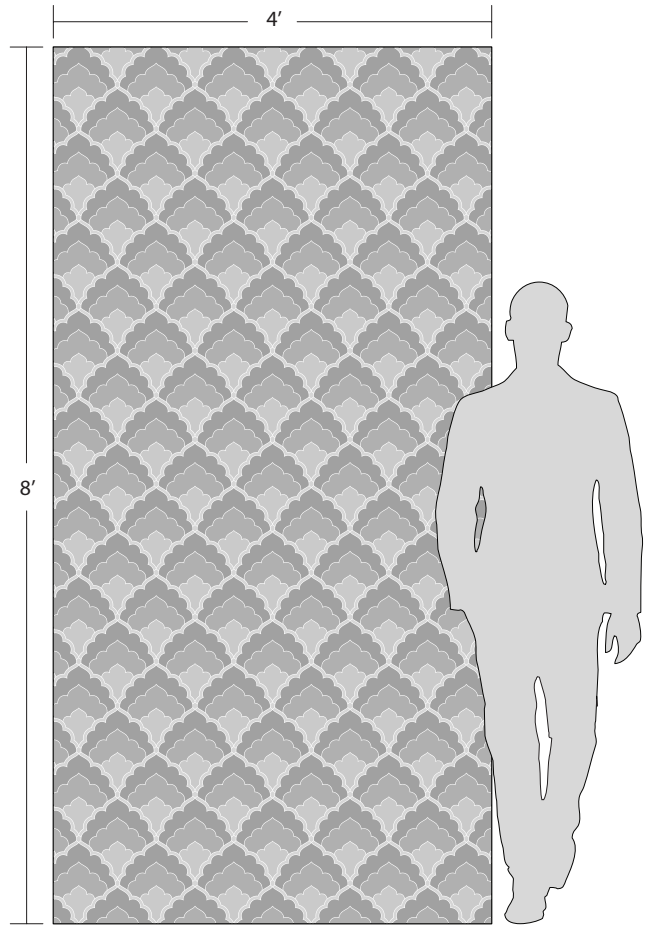
Blue



Cream



Grey



APPLICATIONS								
INTERIOR FLOOR	INTERIOR WALL	SHOWER WALL	SHOWER FLOOR	EXTERIOR FLOOR	EXTERIOR WALL	POOL/ FOUNTAIN	COUNTER TOP	FIREPLACE SURROUND
Commercial Light/ Medium	All	Yes, including steam <sup>2</sup>	Yes, including steam, linear drain <sup>3</sup>	No	Yes, non-freeze thaw	No	Yes	Yes

VARIATION			
V1	V2	V3	V4

INSTALLATION/MAINTENANCE									
SETTING MATERIAL	GROUT	GROUT JOINT	MEMBRANE	CAULK	SEALER	CLEANER	INSTALLATION INSTRUCTIONS	LAYOUT	DRY LAYOUT
Ardex X4 White Tile & Stone Mortar <sup>1</sup>	Ardex FG-C Microtec Unsanded <sup>2</sup>	As established on sheets <sup>3</sup>	Ardex 8 + 9	Ardex SX	AquaMix Sealer's Choice Gold	AquaMix Concentrated Cleaner	TCNA Handbook	No	Sample Dry Layout

MOSAIC
<p>4 1/4" x 9 3/4" x 3/8" Stone Mosaic</p>

NOTES
<p><sup>1</sup> Alternate mortar - Mapei Ultraflex 2 White or Mapei Kerabond White w/Keralastic Additive</p> <p><sup>2</sup> Alternate grout - Mapei Ultracolor Plus FA or Mapei Keracolor Unsanded</p> <p><sup>3</sup> Adena Grey and Adena Blue: No shower floor installation.</p> <p><sup>4</sup> Showers: Product MUST be installed in accordance with current TCNA Handbook Stone Methods.</p> <p>*Tech Note: Individual sheets of this mosaic are not square. Sheets are irregular and combine into a seamless interlocking pattern. Plan your layout accordingly. White mortar is recommended for natural stone. Product MUST be installed in accordance with current TCNA Handbook Stone Methods.</p>