



Shapes of Art

Mosaic
Techniques

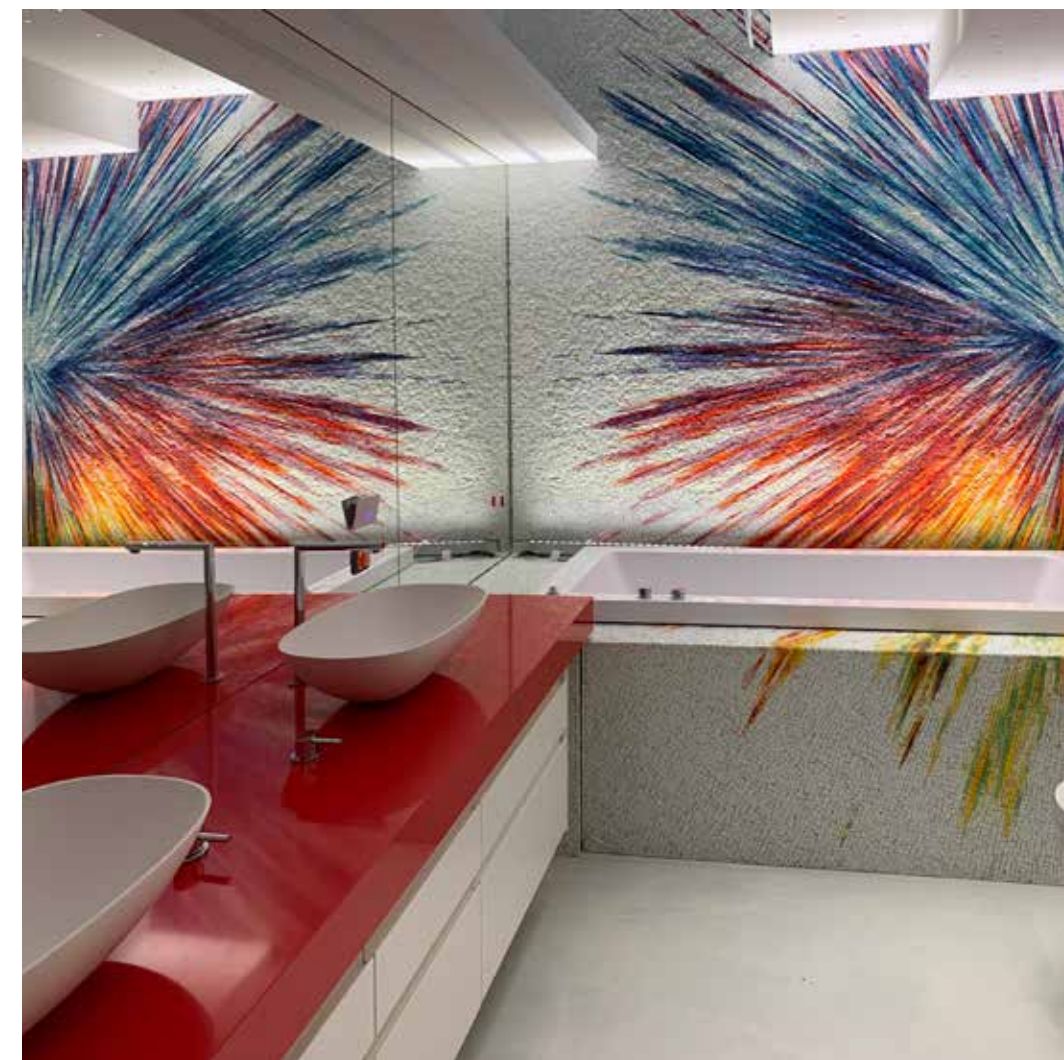


TREND®

Born with style



Beautiful
mosaics.
Exquisitely
designed.



Smalti veneziani artistic mosaic
Private House | Milan, Italy
Architect: Studio Asia, Carla Baratelli

TREND: Respecting a tradition of innovation

With extensive experience in manufacturing, renovation, and design industries, in 2000 **Pino Bisazza** and **Andrea Di Giuseppe** founded the TREND Group. The company is a leading global producer of bull body glass, 24 karat gold mosaic and etherium® by E-Stone engineered agglomerate surfaces.

The company's beginnings rested on an eco-friendly business approach, coupled with a daring industrial philosophy: to expand the tradition of glass mosaic production to new heights by blending Italian artistic heritage with advanced, modern technology.



Wall: Custom design with Karma
Floor: etherium™ Portland Silver | Countertop: etherium™ 1653 Ice Gold
TREND Group USA Headquarters | Miami, FL, USA
Architect: Studio Asia, Carla Baratelli | Photo: Enrico Jose Todini



TREND Group Italy Headquarters | Vicenza, Italy



Crafted by Nature,
Designed with Style.



Green is
much more
than a color.

Because green is much more than a color. Long before it became fashionable, TREND Group declared a commitment to implementing real-world processes that protect and preserve the planet's resources.

TREND Group's products are manufactured using up to 78% of post-consumer recycled glass and 60% less raw material.

Combining technological advances with environmental awareness, TREND introduces collections created from post-consumer recycled glass. Colors inspired by nature, expressions of contemporary style, examples of using our resources more efficiently.

Nature becomes color. Design becomes style.

Transforming design dreams into reality

The durability and versatility of mosaic makes it ideal for interior and exterior design, as well as for decorating both private and public spaces. From home decoration to hotel common areas and spas, from swimming pools to building facades, from standard-pattern wallpapers to fully-customised logos and designs: glass mosaic offers endless possibilities of application. Thanks to the expertise and creative intuition of the artistic division, TREND is able to give shape even to the most extravagant of dreams.

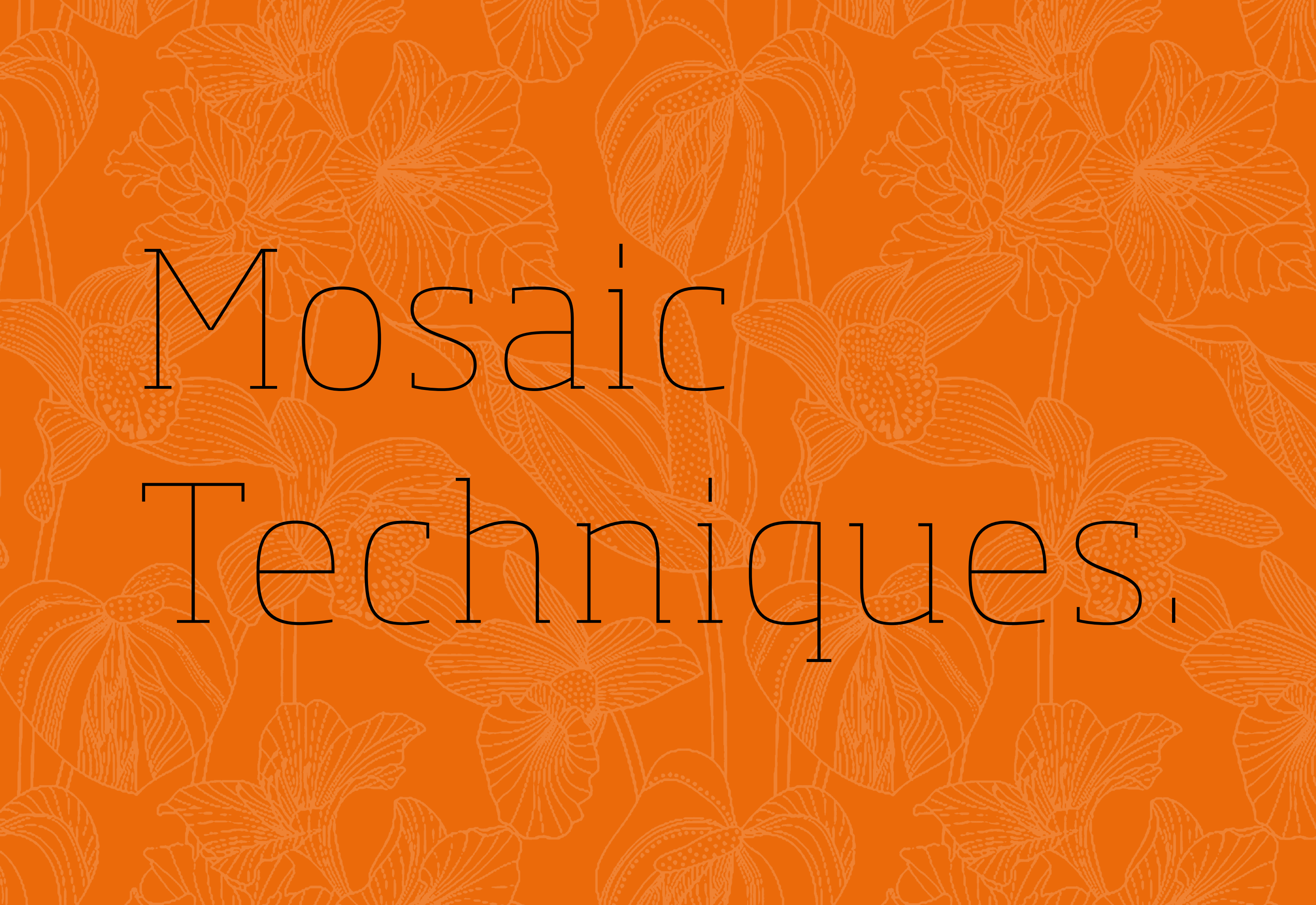
Eco-philosophy

Nature is the number one supplier of TREND's materials which are then turned into mosaics, agglomerates and Venetian smalti. Nature is the inspiration for TREND's decorations, collection concepts, and project designs. In turn, TREND gives back to Nature by using sustainable practices such as using recycled materials and reducing water consumption.

Colors inspired by nature, expressions of contemporary style, examples of using our resources more efficiently.

78%
post-consumer
recycled glass





Mosaic

Techniques.

The design possibilities of TREND mosaic are limited only by your imagination.

With over 300 colors to choose from, any image or pattern can be accurately reproduced in glass tile. The TREND artistic lab collaborates with you to choose the palette and technique to give shape to your dream design.



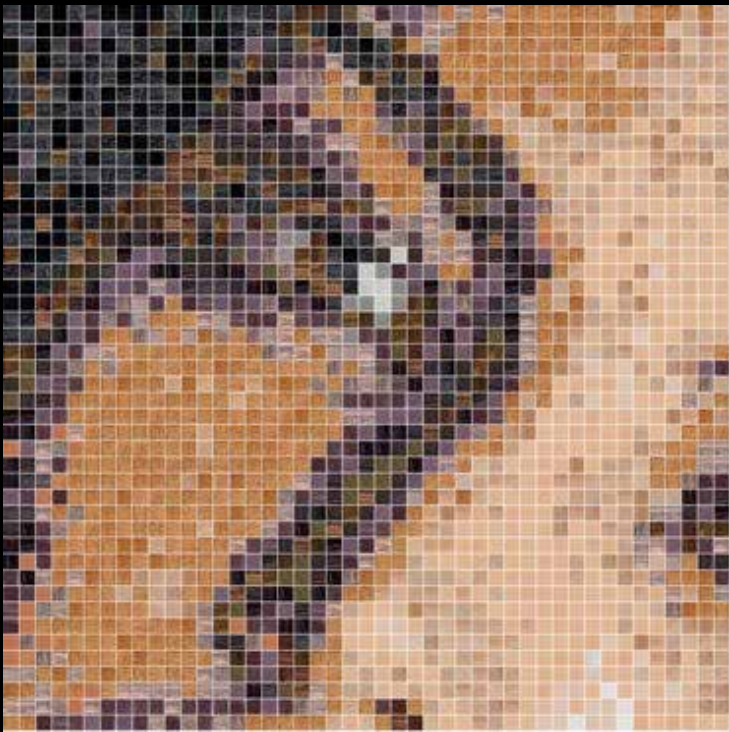
Original image



Artistic hand cut technique



CAD technique 1 x 1 cm | 3/8" x 3/8"



CAD technique 2 x 2 cm | 3/4" x 3/4"

Information to create your artistic project

Send us the following information:



1. YOUR IDEA

Your design concept or any image you are looking to reproduce. The image can be in .jpeg / .tiff / .bmp format, a photo, a painting, a piece of fabric...



2. TECHNICAL DATA

Exact height and width of the area to be coated. DWG files are preferred.



CAD mosaic, custom design (1 x 1 cm | 3/8" x 3/8")
Kingdom of Beauty, Aldo Coppola Salon | Milan, Italy
Architect: Anton Kobrinetz | Photo: Arian Brajkovic

CAD Technique

2 x 2 cm | 3/4" x 3/4"
1 x 1 cm | 3/8" x 3/8"



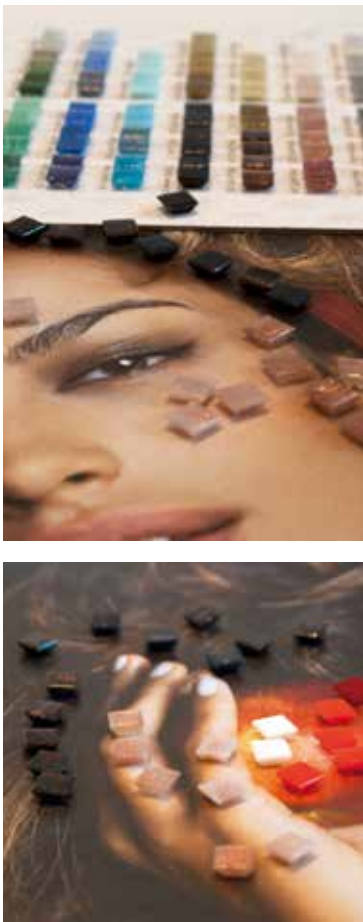
CAD mosaic, custom design (1 x 1 cm | 3/8" x 3/8")
Kingdom of Beauty, Aldo Coppola Salon | Abu Dhabi, UAE
Architect: Anton Kobrinetz

CAD technique

1. ORIGINAL DRAWING



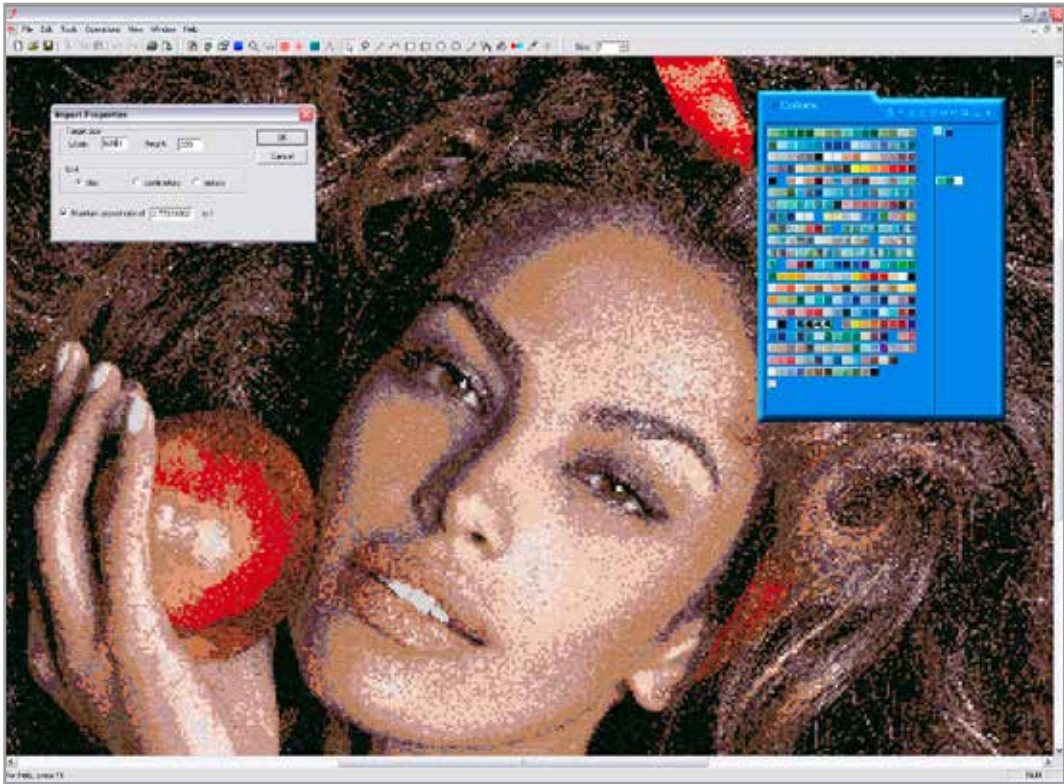
2. COLORS SELECTION



4. PROJECT LAYOUT



3. COMPUTER ELABORATION



We can reproduce any image using a proprietary mosaic software exclusively owned by TREND.

This technique is particularly indicated for the development of modern and contemporary pictorial and photographic representations on large surfaces.

The designs are reproduced using whole tiles of 1 x 1 or 2 x 2 cm (3/8" x 3/8" or 3/4" x 3/4") and a full sheet fixing map with consecutive numbering. This technique allows to reproduce well-proportioned subjects, tailored to the dimensions of the surface to be coated.

5. PRODUCTION GRID & FIXING MAP



6. PRODUCTION



7. FINAL RESULT

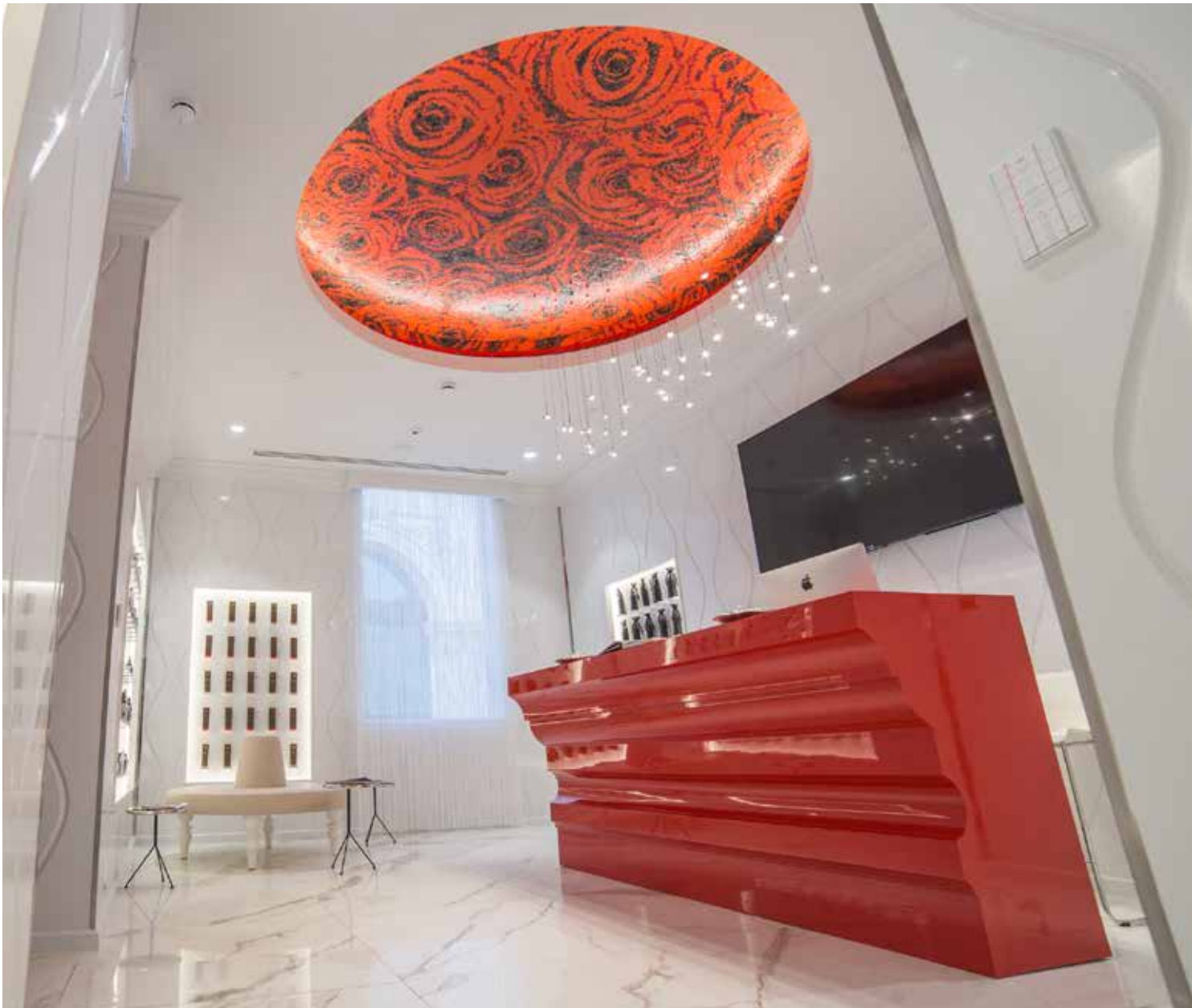


CAD mosaic, custom design (1 x 1 cm | 3/8" x 3/8")
Kingdom of Beauty, Aldo Coppola Salon | Milan, Italy
Architect: Anton Kobrinetz | Photo: Arian Brajkovic

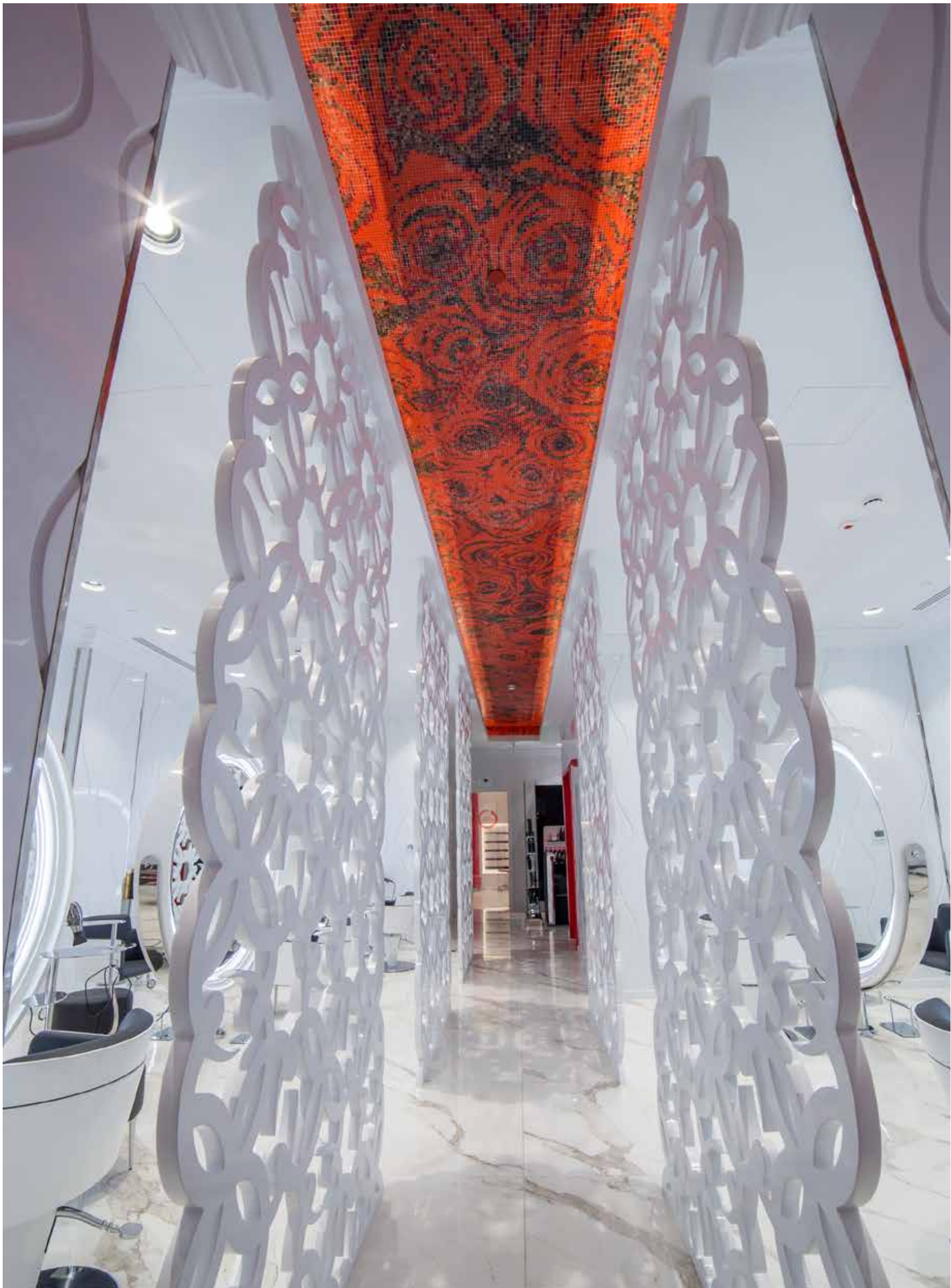
CAD technique projects



Kingdom of Beauty | Aldo Coppola Salon
Abu Dhabi, UAE



CAD mosaic, custom design (1 x 1 cm | 3/8" x 3/8")
Architect: Anton Kobrinetz





CAD mosaic, custom design (1 x 1 cm | 3/8" x 3/8")
Architect: Anton Kobrinetz | Photo: Arian Brajkovic

Kingdom of Beauty | Aldo Coppola Salon Milan, Italy



Roses are the leitmotif of the whole salon as the red rose was Aldo Coppola's favorite flower.

Kingdom of Beauty | Aldo Coppola Salon
Milan, Italy



TREND mosaic tiles have a starring role in the new Aldo Coppola salon in Milan. Art and beauty come together right in the city's center.

Milan has a new temple dedicated to beauty: Aldo Coppola's spectacular new salon, which is embellished by TREND's refined mosaics. In the salon's approximately 1.000 square meters of white Carrara marble,

TREND's extraordinary mosaic tiles stand out (1 x 1 cm | 3/8" x 3/8"), recreating historical Aldo Coppola-L'Oréal calendar images: professional photographs taken by great artists like Fabrizio Ferri and Oliviero Toscani.

CAD mosaic, custom design (1 x 1 cm | 3/8" x 3/8")
Architect: Anton Kobrinetz | Photo: Arian Brajkovic

Private Villa
France



Chic and cozy remodeled villa
with refreshing pool.

Pool: CAD mosaic, custom design (2 x 2 cm | 3/4" x 3/4")
Creation by Miracleroom | Photo: Maisondazur



Andaz Dubai The Palm
Dubai, UAE



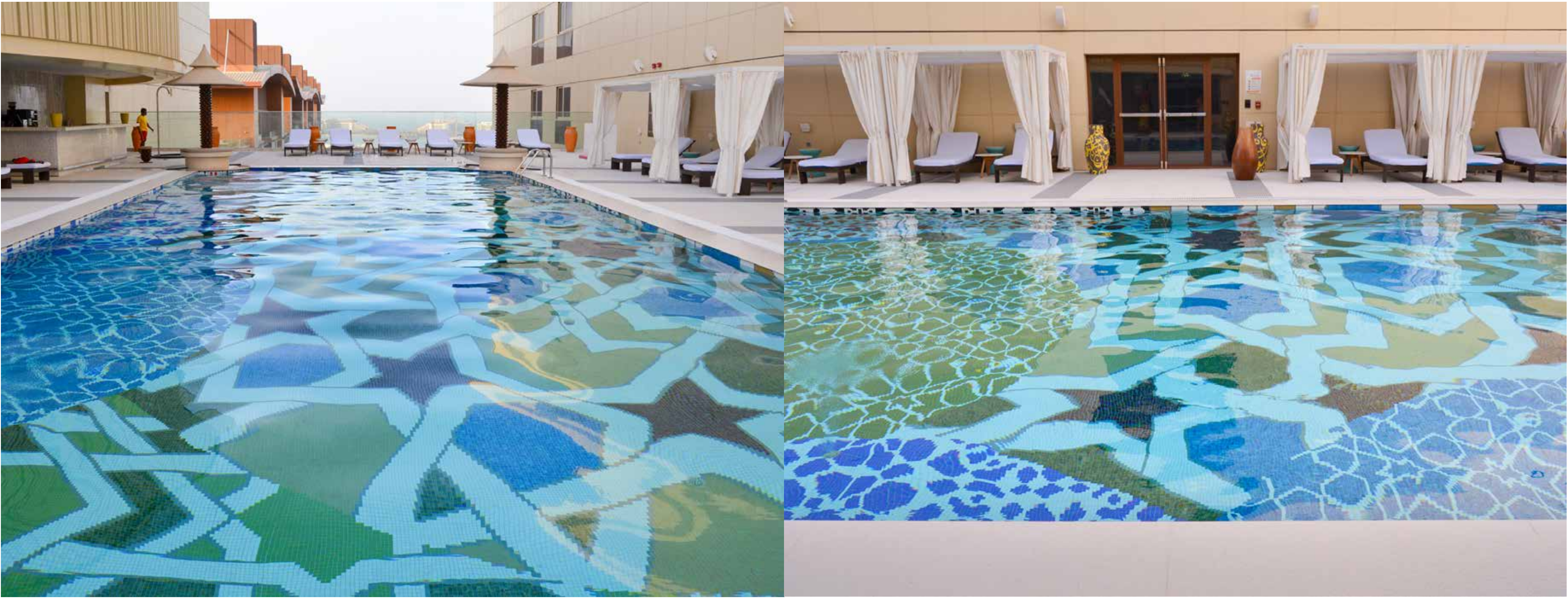
The 'arabesque' motive is a traditional Arab ornamental style symbolizing the underlying order and unity of nature and has become an increasingly prominent trend in the contemporary interior design space in this part of the world.

Pool: CAD mosaic, custom design
(2 x 2 cm | 3/4" x 3/4")

The stunning rooftop pool, designed by Glintmeijer Design Studio LLC, features one of our exclusive CAD mosaic decorations.



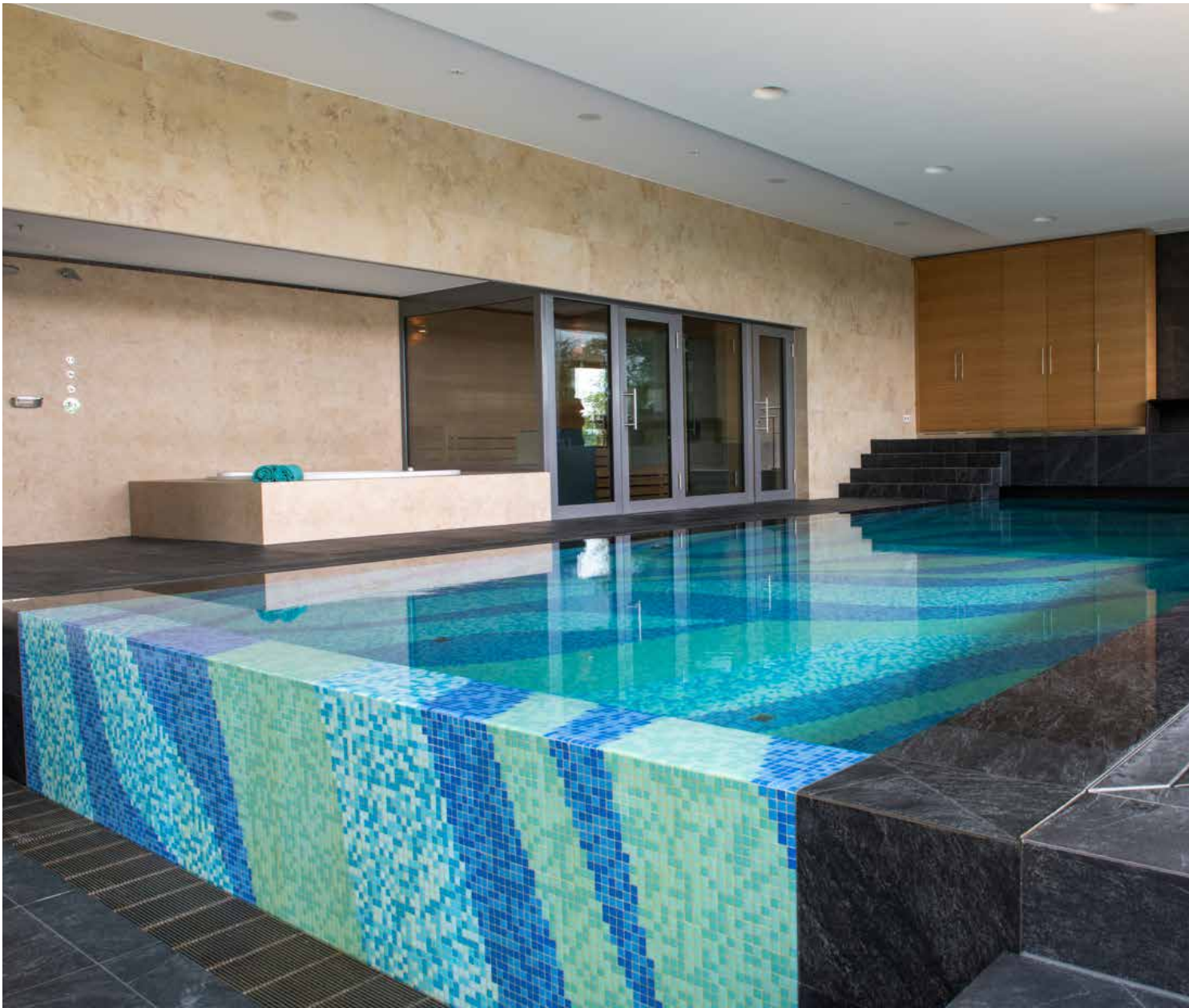
Andaz Dubai The Palm
Dubai, UAE



An impressive example of the special bond that exists between tradition, modern architecture and fashion.

Pool: CAD mosaic, custom design (2 x 2 cm | 3/4" x 3/4")

Private pool & spa
Munich, Germany



Waves of color in a beautifully designed and exclusive infinity pool create the ultimate relaxation.



CAD mosaic, custom design with Vitreo, Brillante and Feel mosaic (2 x 2 cm | 3/4" x 3/4")

Vertex Pharmaceutical
San Diego Office, USA



With the CAD technique we
can transform any image into a
custom-tailored artwork.



CAD mosaic, custom design (2 x 2 cm | 3/4" x 3/4")
Architect: DGA architects | Photo: Studio MAHA

Vertex Pharmaceutical
San Diego Office, USA



CAD mosaic, custom design (2 x 2 cm | 3/4" x 3/4")
Architect: DGA architects | Photo: Studio MAHA

Santa Marina Resort & Villas
Mykonos, Greece



Pool: custom mix (2 x 2 cm | 3/4" x 3/4")
Wall: CAD mosaic, custom design (2 x 2 cm | 3/4" x 3/4")



Artistic Technique

Hand cut mosaic



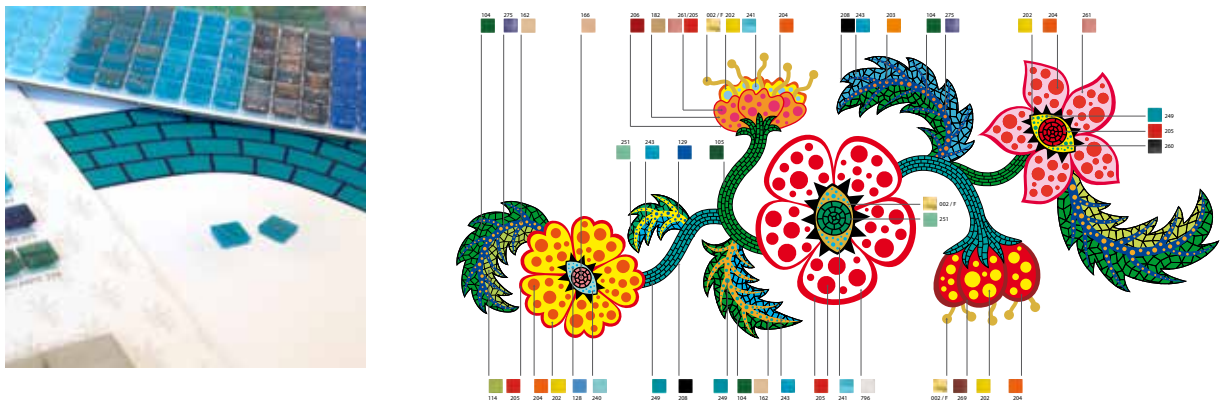
Custom design artistic mosaic (1 x 1 cm | 3/8" x 3/8")
Musée du Louvre-Lens | Lens, France
Architect: Sanaa | Kazuyo Sejima, Ryue Nishizawa
Design: Yayoi Kusama
Photo: Dal Bosco

Artistic technique

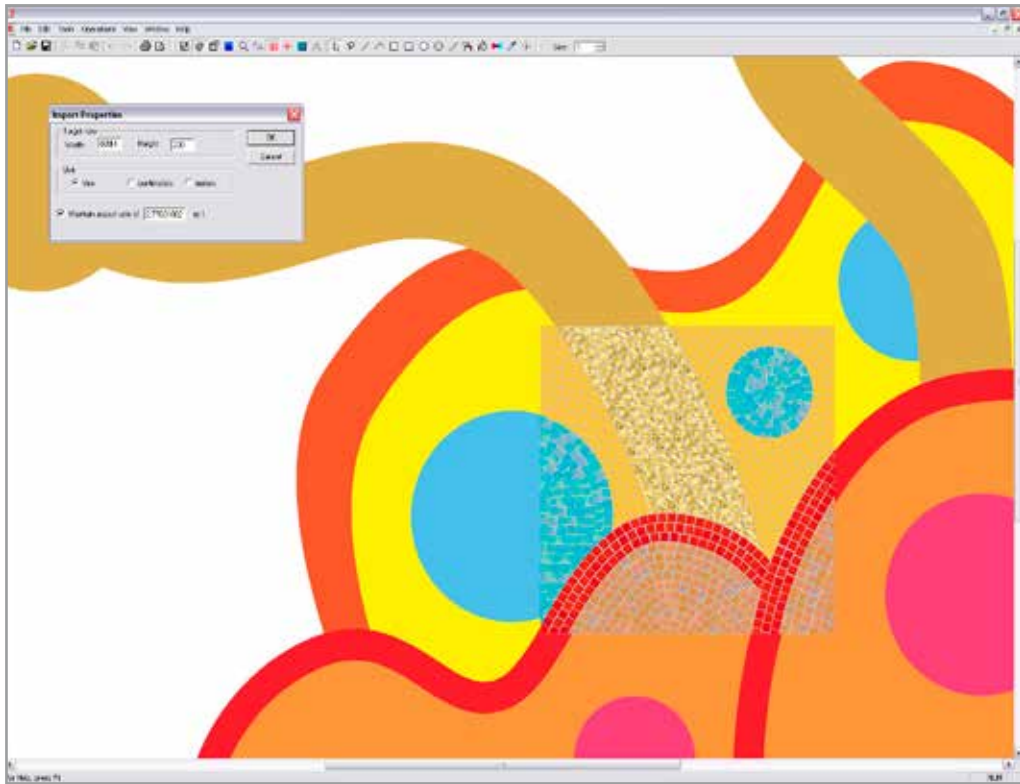
1. ORIGINAL DRAWING



2. COLORS SELECTION



3. COMPUTER ELABORATION



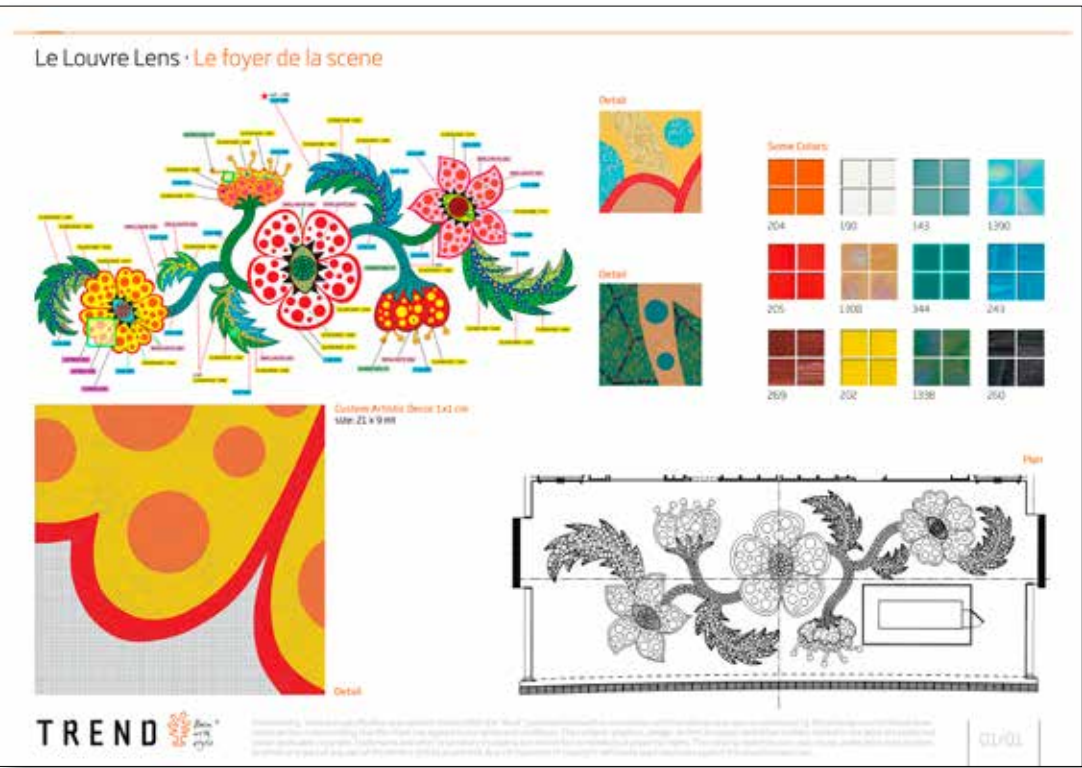
We can reproduce any image using a proprietary mosaic software exclusively owned by TREND.

This technique allows you to reproduce subjects that are complex and rich in details. It lends itself to the development of classical subjects and natural motifs with soft and curvilinear trends. The artistic technique develops a fixing map of interlocking sheets with consecutive numbering.

The pieces used are generally very small in size, whole or cut, allowing for a faithful and detailed representation of the subject. Each tile is unique in color and shape and is laid manually following the design of the decor.

To have total control over the final result, all the decors are laid dry on the production site before being divided into sheets and delivered to the client.

4. PROJECT LAYOUT



5. PRODUCTION GRID & FIXING MAP



6. ARTISTIC PRODUCTION



7. FINAL RESULT



Artistic mosaic, custom design (1 x 1 cm | 3/8" x 3/8")
Musée du Louvre-Lens | Lens, France
Architect: Sanaa | Kazuyo Sejima, Ryue Nishizawa
Design: Yayoi Kusama
Photo: Dal Bosco

Artistic Technique Projects

Artistic mosaic, custom design (1 x 1 cm | 3/8" x 3/8")
Love is... | Waterway Point, Punggol, Singapore
Design: Sun Yu-li | Artbeatz | artbeatz.com.sg



Designed by Singaporean artist Sun Yu-li, "Love is..." was commissioned by Waterway Point shopping mall (Punggol New Town, Singapore) for its opening in 2016. The mosaic wall decoration is

composed of over 400 imprints created by the residents of the mall area and captures the memories, reflections and dreams of this vibrant community. The wall measures 20 x 3 m | 65,6' x 9,8'.

TREND Headquarters
Miami, FL, USA



Murano 1 | Murrine collection (1 x 1 cm | 3/8" x 3/8")



TREND Headquarters | Miami, FL, USA
Murano 1 | Murrine collection (1 x 1 cm | 3/8" x 3/8")

KU64 Dental Clinic
Berlin, Germany



Berlin-based Studio Karhard chose TREND for the restyling of the KU64-Zahnarzt-Berlin dental practice. The floral-style mosaic decorations are

inspired by the wallpapers of the New Palace in Potsdam, a Rococo-style building commissioned by Frederick the Great in 1763.

Artistic mosaic, custom design (1 x 1 cm | 3/8" x 3/8")
Architect: Studio Karhard
Photo: Stefan Wolf Lucks

KU64 Dental Clinic
Berlin, Germany



Artistic mosaic, custom design (1 x 1 cm | 3/8" x 3/8")
Architect: Studio Karhard
Photo: Stefan Wolf Lucks



PrimaVera Villa
Miami Beach, FL, USA



Blue Tropic | Artistic mosaic (1 x 1 cm | 3/8" x 3/8")
Photo: Dal Bosco



PrimaVera Villa
Miami Beach, FL,USA

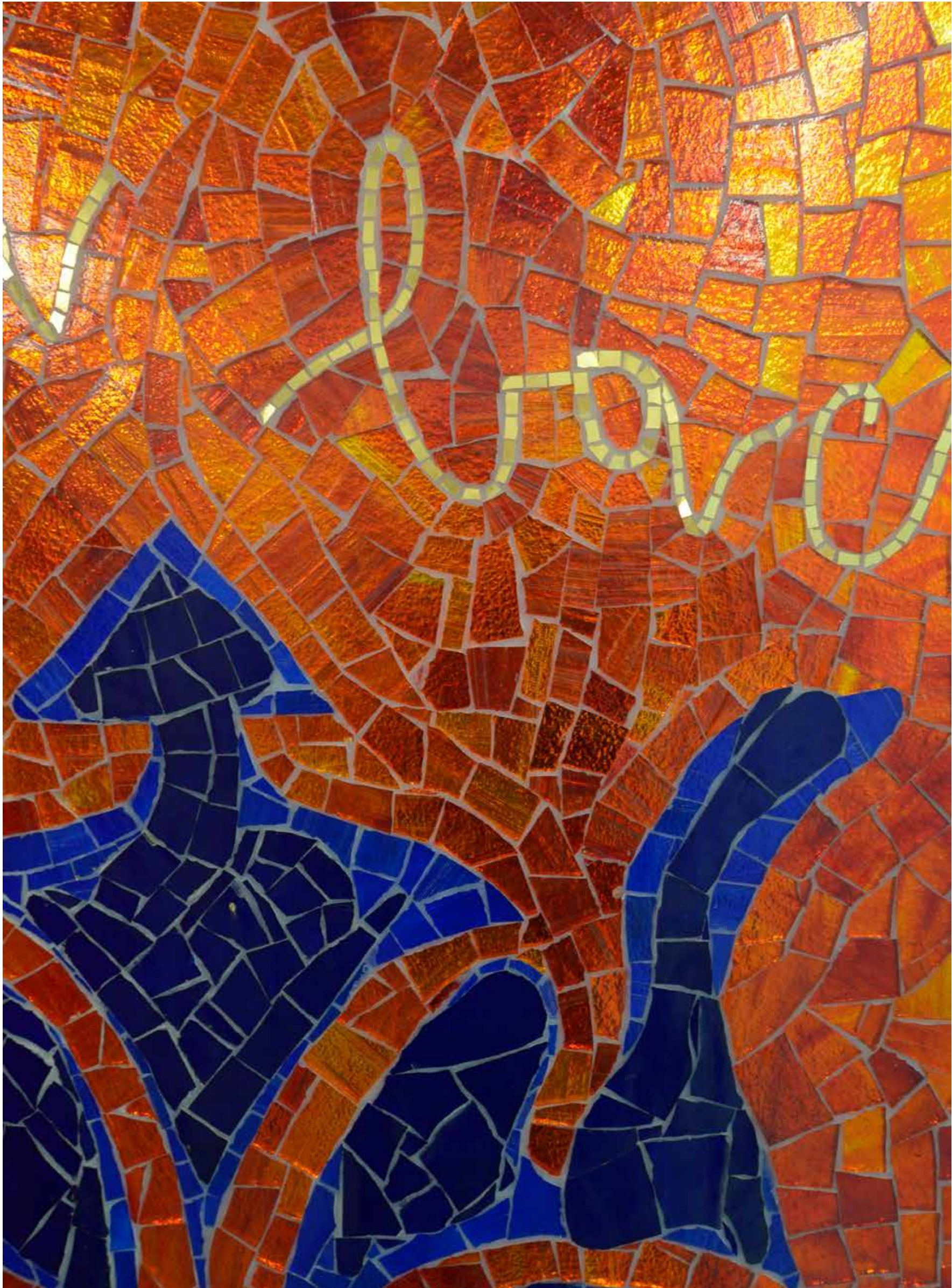


Orange Orchids | Artistic mosaic (1 x 1 cm | 3/8" x 3/8")
Photo: Dal Bosco

PrimaVera Villa
Miami Beach, FL, USA



Artistic mosaic with Glamour and Aureo (hand-cut)
Work of art by Marco Nereo Rotelli
Floor: TREND Origina® 1610 Royal Ivory
Elevator Floor: Trascenda Portland White
Photo: Dal Bosco



AMLI Midtown Miami
Miami, FL, USA



Artistic mosaic, custom design (1 x 1 cm | 3/8" x 3/8")

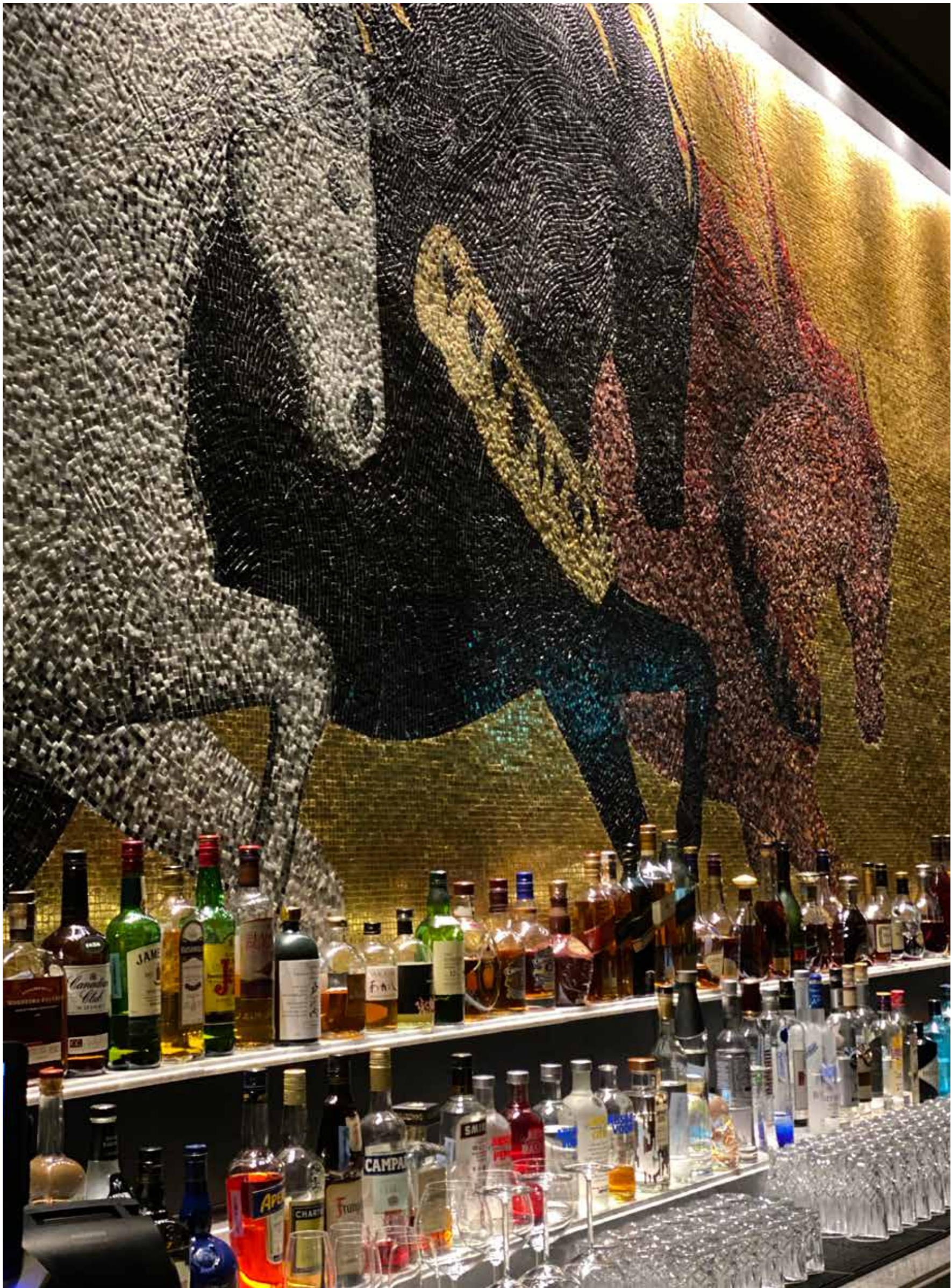


The nexus of Midtown, Wynwood, the Design District and Edgewater. New restaurants, cafes, art installations and high-end retail shops are flourishing in the area.

The St. Regis Bar
Amman, Jordan



Artistic mosaic, custom design (1 x 1 cm | 3/8" x 3/8")





The St. Regis Bar | Amman, Jordan
Artistic mosaic, custom design (1 x 1 cm | 3/8" x 3/8")

The unique
furnace in Venice.



Orsoni
VENEZIA 1888

The historical Venetian
furnace that uses the same
techniques since 1888

Historic Color Panel

The renowned panel created by Angelo Orsoni was born from Orsoni's color library that preserves more than 3,500 different colors of Venetian smalti. It was displayed for the first

time at the Universal Exhibition in Paris in 1889. Years later Antoni Gaudí was inspired by its beauty and decided to use smalti Orsoni in the decoration of the Sagrada Família.



Historic color panel inside the color library
Orsoni Venezia 1888 | Venice, Italy

Art created by fire.



Garden night view
Orsoni Venezia 1888 | Venice, Italy



The true Gem of Venice

It is enough just to step over the threshold and be carried away by the magic of a world where time seems to have stood still. The fire, the furnace, the marbled crucibles - every corner reveals a part of the legendary tradition of creating glass for mosaic.

Orsoni
VENEZIA 1888

The crucibles



The crucible is the heart and emblem of the Furnace.

The crucibles, the melting pot in which history, art, culture and tradition are blended with glass and color at high temperatures to recreate the magic of Venetian smalti. The indelible trace of this process is represented by the infinite color tonalities and shades that remain impressed on the crucible, overlapping with each new passage in the furnace and giving life to unique and timeless artworks.

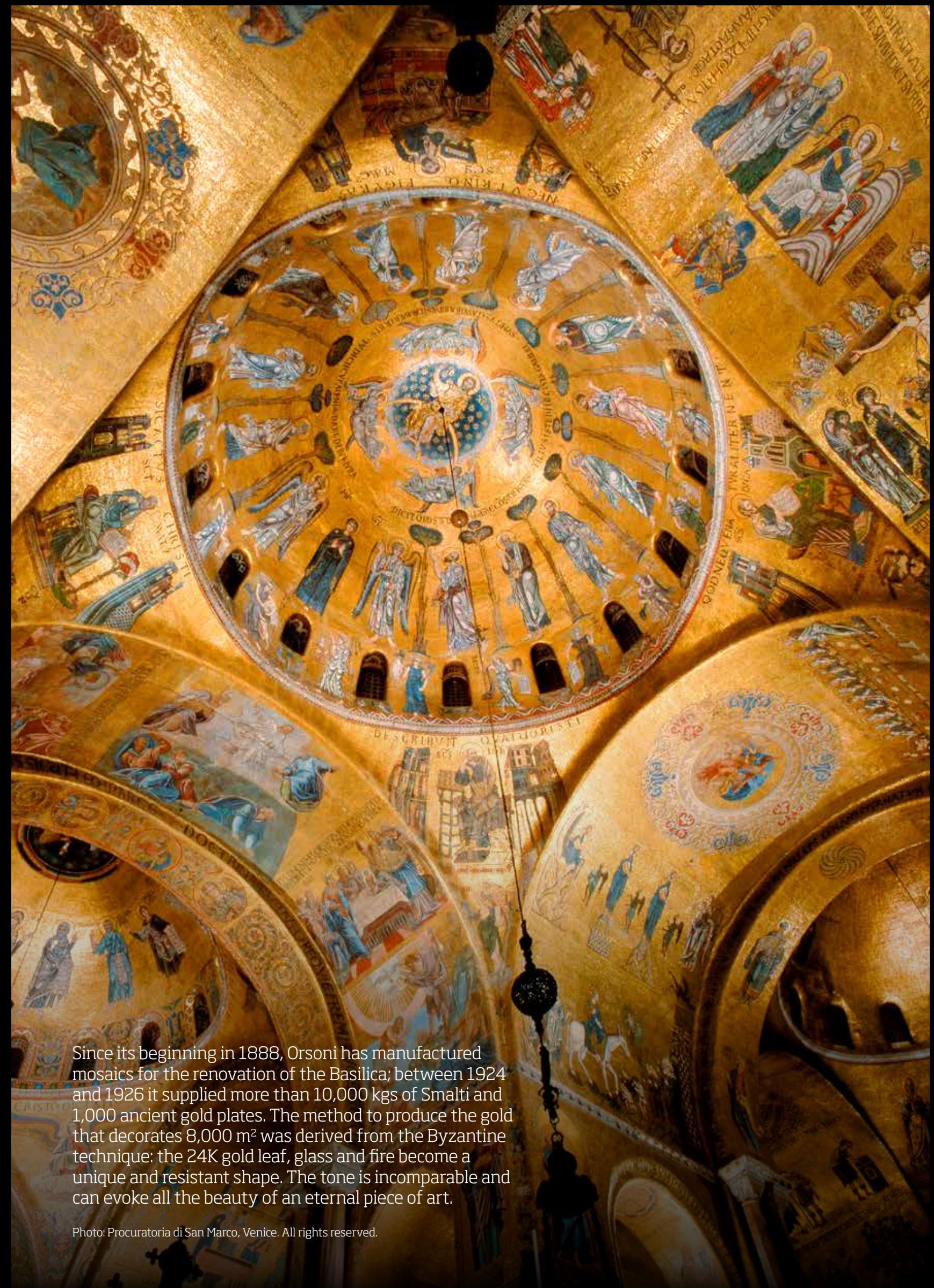
Orsoni
VENEZIA 1888

The Color Library



The magical place where smalti are kept is the color library, a display of more than 3,500 colors of different tones and shades.

Basilica San Marco
Venice, Italy



Since its beginning in 1888, Orsoni has manufactured mosaics for the renovation of the Basilica; between 1924 and 1926 it supplied more than 10,000 kgs of Smalti and 1,000 ancient gold plates. The method to produce the gold that decorates 8,000 m² was derived from the Byzantine technique: the 24K gold leaf, glass and fire become a unique and resistant shape. The tone is incomparable and can evoke all the beauty of an eternal piece of art.

Photo: Procuratoria di San Marco, Venice. All rights reserved.

Art created by glass



Each piece is uniquely crafted
with an expert touch.

The authentic 24 karat gold leaf is made with
the ancient technique of the goldbeater and
used for the pure gold mosaic made in Venice
with the same unique process since 1888.

Orsoni
VENEZIA 1888

The Golden Treasure
Venice, Italy

13 shades of Orsoni gold enhance the walls with infinitive reflections. The production of gold leaf glass mosaic has its roots in the history of this nineteenth-century furnace.

Custom design | shades of Orsoni golds (hand-cut 1 x 1 cm | 3/8" x 3/8")
Architect: Studio Asia, Carla Baratelli

Sagrada Familia,
Barcelona, Spain

Since 1926, Orsoni has supplied uncut smalti for the decoration of the irregular shapes, blending bright colors and delicate structures with the expressive, decorative sculpture of Gaudí. Still today, Orsoni is manufacturing special glass tiles suitable for the new assembly methods to mount the decors of the remaining steeples still to be built. The tesserae is placed on the cypress, the facade of the Nativity, the pinnacle and on the towers.



Sagrada Familia
Barcelona, Spain

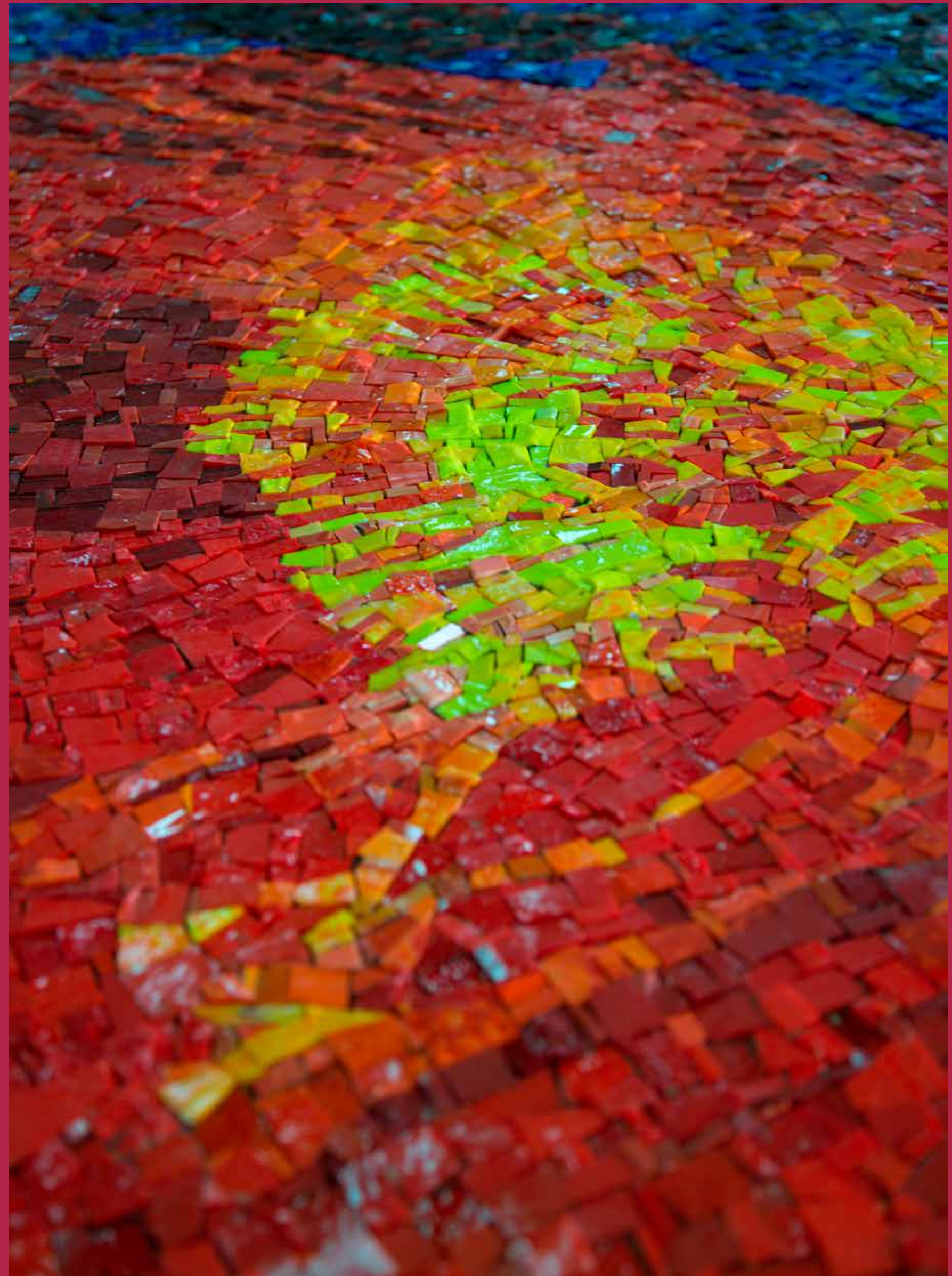


Each smalti ordered by the Sagrada Familia has its own original name like "scorzetta" or "becco di merlo".

Traditional Technique with Smalti

Modern and Classical
interpretations

Orsoni
VENEZIA 1888



Modern interpretation

Traditional technique with smalti

1. ORIGINAL DRAWING



The traditional technique uses cracked or small plates of smalti to reproduce subjects that are complex and rich in details. We produce mosaics both face up and face down.

Particular attention is paid to the choice of colors, which is key to ensuring that the mosaic reproduces the chosen subject as faithfully as possible. After having identified the reference color ranges, smalti slabs are cut by hand to obtain the desired size pieces.

2. COLORS SELECTION



3. ARTISTIC PRODUCTION



Each piece of mosaic of smalti is unique in color and shape.



4. FINAL RESULT



Poppies (200 x 200 cm | 78 47/64" x 78 47/64")
Traditional technique with Venetian smalti

Classical interpretation

Traditional technique with smalti

1. ORIGINAL DRAWING



2. ARTISTIC PRODUCTION



3. FINAL RESULT



Flying Carpet (265 x 150 cm)
Traditional technique with Venetian smalti
Architect: Studio Asia, Carla Baratelli

The traditional technique with smalti is ideal in classical works, Orsoni Venezia's Venetian smalti play a major role, thanks to the lyric of light that they reflect, and the richness of the colors used.

Portrait Technique

Traditional technique with smalti

1. ORIGINAL IMAGE

Portrait of His Highness Sheikh Mohammed bin Rashid Al Maktoum.

More than 40 kgs of smalti and 3 kgs of gold were used to create the mosaic portrait. 80 different colors for the skin, nearly 20 different shades for the beard and an additional 45 colors were used to accurately reproduce the image.

Approximately 400 hours of work were required to complete this exceptional artwork.



2. ARTISTIC PRODUCTION



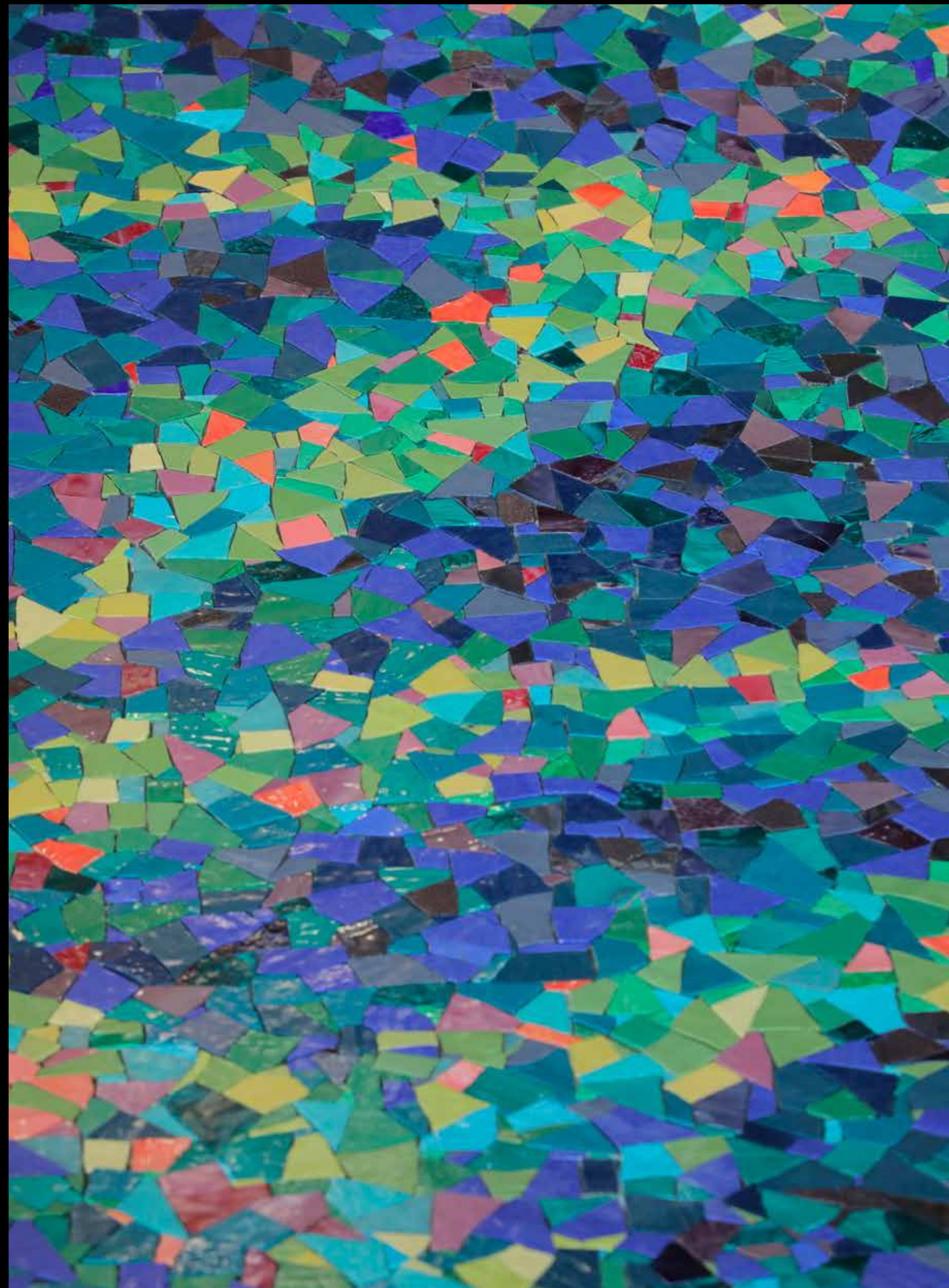
3. FINAL RESULT



Portrait Technique



Smalti Technique Projects



W Hotel The Palm
Dubai, UAE



The new Marriott Bonvoy W Hotel in Dubai designed by Jean Nouvel was built on Palm Jumeirah, the iconic artificial island overlooking the city.

Custom design with Venetian smalti
Design director: Mohamed Kafel
(Al Sharq Investments)
Senior designer: Monica Twarowski
(Design Worldwide Partnership)
Photographer: Countdown Media - Fadel Itani

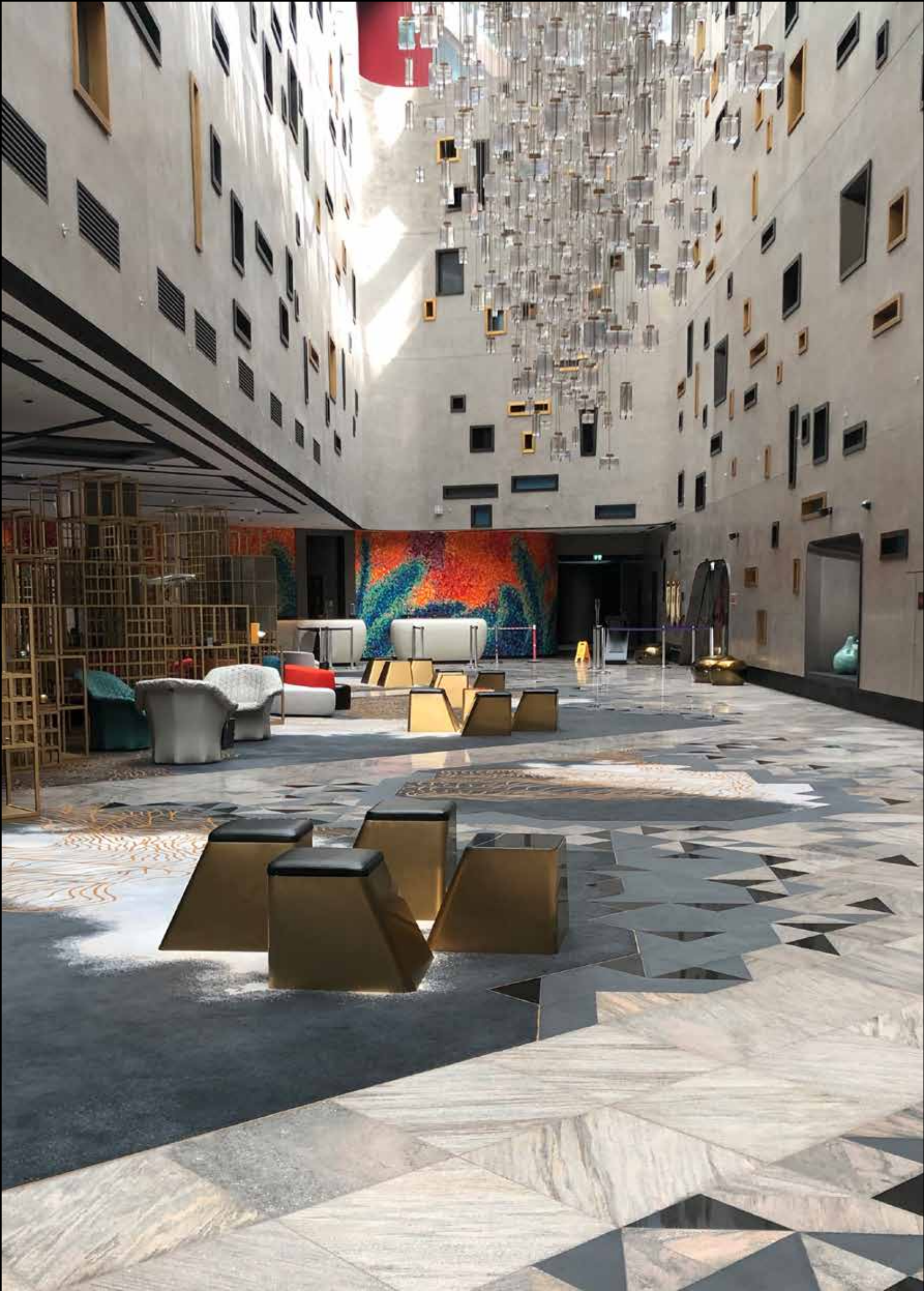
W Hotel The Palm
Dubai, UAE



Custom design with Venetian smalti

The abstract Foliage design recalls wild leaves and was made with a smalti reinterpretation of the traditional Catalan trencadís technique by cutting smalti plates into irregular sized and shaped pieces. The end result is a unique and modern design.

Orsoni
VENEZIA 1888



W Hotel The Palm
Dubai, UAE



In one of the tunnels one can observe another bespoke abstract pattern inspired by the sunset seen from the desert part of the city that recalls the chromatic hues of Dubai’s dunes.

Custom design with Venetian smalti

W Hotel The Palm
Dubai, UAE

Custom design with Venetian smalti
Design director: Mohamed Kafel



D & G Boutique
Paris, France



Napoléon Bonaparte and Joséphine, from painting to mosaic: the choice and hand-cutting of tesserae; the study of the colors and the combination of venetian smalti and glazes with marble tiles. Then re-composition, verification and, finally, the installation. Simply put: a piece of art realized with passion, rigor and 'sartorial precision'.

Custom design with Venetian smalti
Mosaic realization: @FriulMosaic.
Renovation Project: Eric Carlson, Carbondale Studio
Photo: Alessandra Chemollo



D & G Boutique
Paris, France



From the top of the staircase, the mosaic portraits of Napoléon Bonaparte and Joséphine welcome us to a world that oozes imperial elegance.

Custom design with Venetian smalti
Mosaic realization: @FriulMosaic
Renovation Project: Eric Carlson, Carbondale Studio
Photo: Alessandra Chemollo



Private House
Milan, Italy



Custom design with Venetian smalti
Architect: Studio Asia, Carla Baratelli

This smalti mosaics with infinite color shades come to life as a result of master craft manufacturing alchemy. The tiles are all hand cut in various dimensions and each piece is unique.

Private House,
Milan, Italy



Custom design with Venetian smalti
Architect: Studio Asia, Carla Baratelli

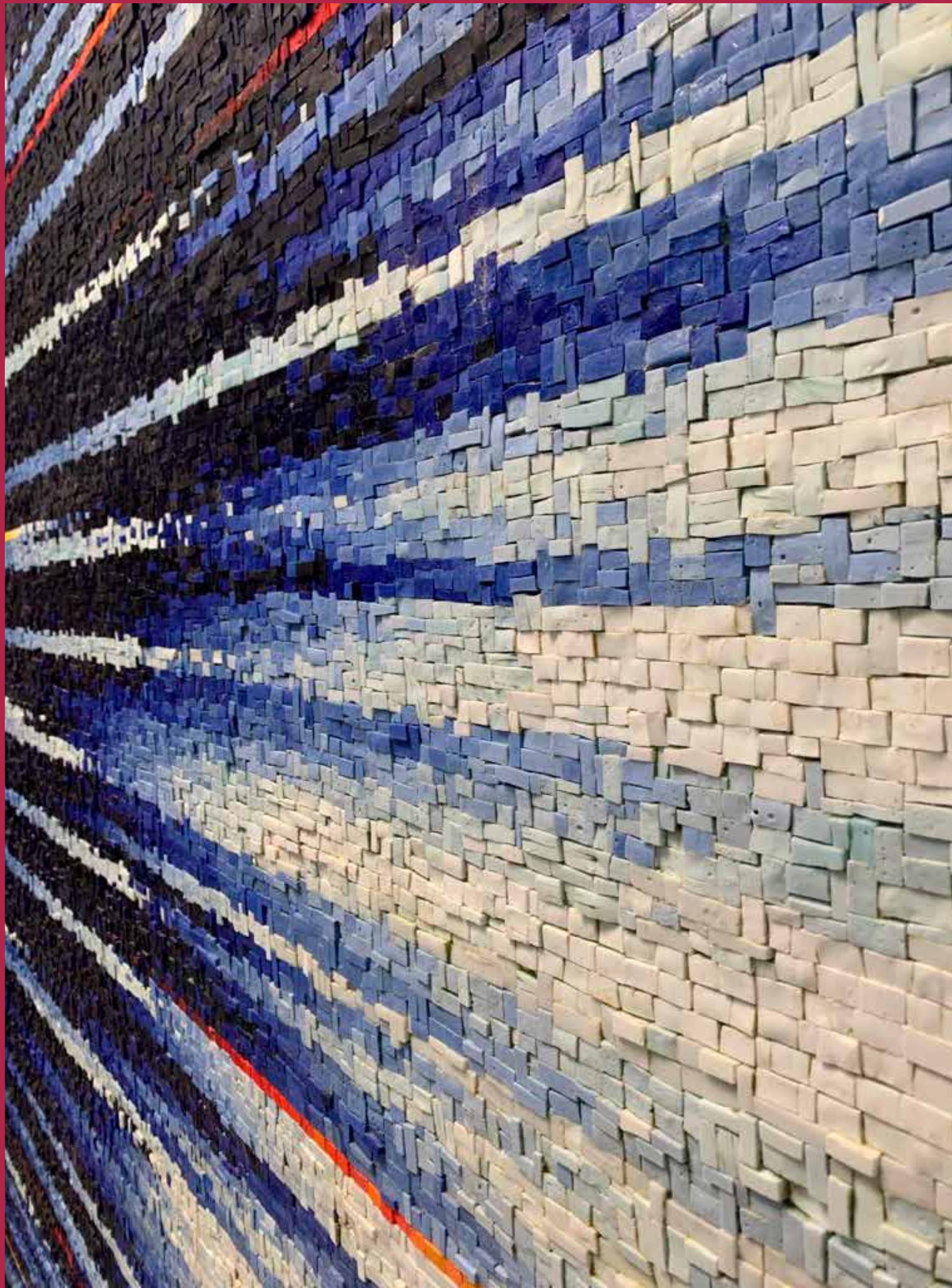
Private House
Milan, Italy



Custom design with Venetian smalti
Architect: Studio Asia, Carla Baratelli

Orsoni
VENEZIA 1888





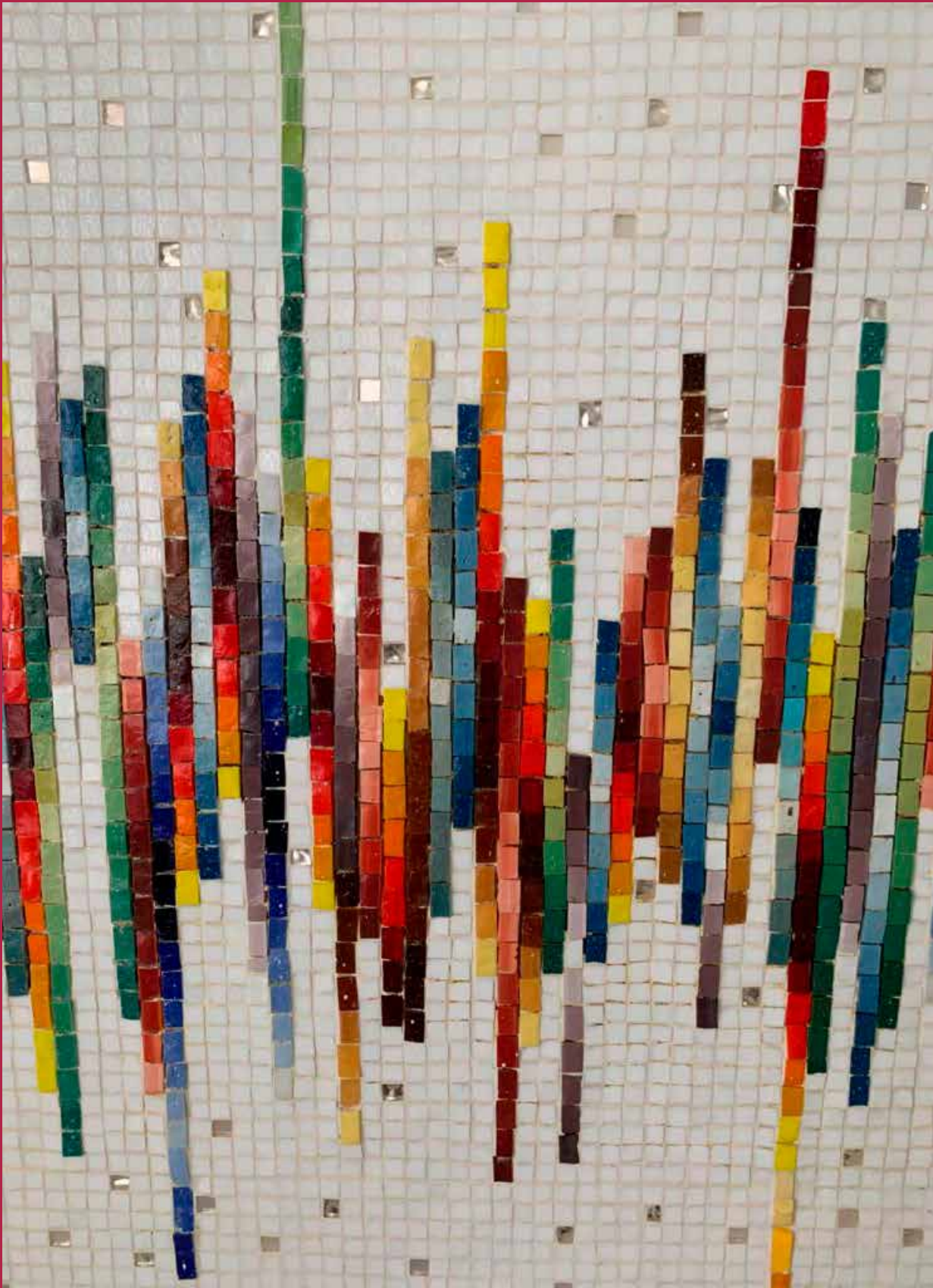
Private House,
Milan, Italy



Custom design with Venetian smalti
Architect: Studio Asia, Carla Baratelli

Orsoni
VENEZIA 1888

Private House
Milan, Italy



Custom design with Venetian smalti
Architect: Studio Asia, Carla Baratelli





Casa Burano By Venissa Venice, Italy



Custom design with Venetian smalti
Designed by the Architect Silvia Lupi | Studio Baukuh
Photo: Mattia Mionetto

Casa Burano by Venissa is a stunning example of the multi-building hospitality concept. The hotel was born in 2015 from the renovation of some of Burano's historic houses, once inhabited by local fishermen and lace makers, and offers an authentic experience of the island's distinctive trait: color!

Casa Burano By Venissa
Venice, Italy



Custom design with Venetian smalti
Designed by the Architect Silvia Lupi | Studio Baukuh
Photo: Mattia Mionetto

The entrance welcomes guests with an explosion of shades and hues thanks to the refined mosaic floors with venetian smalti.

Tiger

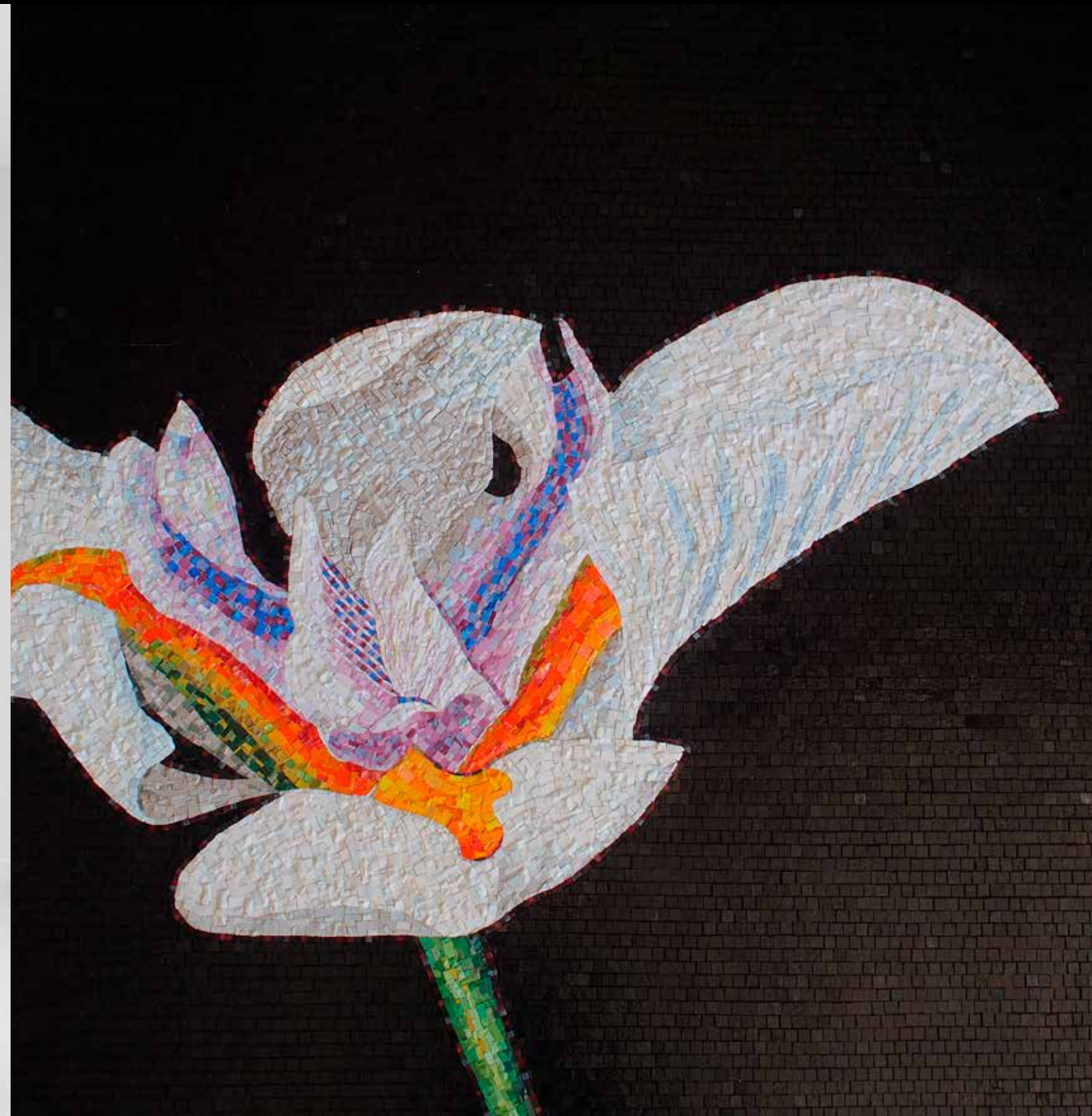


Orsoni smalti have the extraordinary power to absorb and reflect light, enhancing any surface and transforming it into a fine piece of art.

Tiger | Custom design with Venetian smalti
200 x 200 cm | 78 47/64" x 78 47/64"

Orsoni
VENEZIA 1888

Iris



Iris | Custom design with Venetian smalti
200 x 200 cm | 78 47/64" x 78 47/64"
TREND Group USA Headquarters | Miami, FL, USA
Photo: Enrico Jose Todini

Completely handcrafted artworks in
which light and color magically merge.

Orsoni
VENEZIA 1888

Urban Lady



Urban Lady | Custom design with Venetian smalti
180 x 122 cm | 48" x 70 5/8"
TREND Group USA Headquarters | Miami, FL, USA
Photo: Enrico Jose Todini

Orsoni
VENEZIA 1888



Urban Lady

Urban Lady | Custom design with Venetian smalti
180 x 122 cm | 48" x 70 5/8"
Floor: Trascenda Portland White
TREND Group USA Headquarters | Miami, FL, USA
Architect: Stusio Asia, Carla Baratelli
Photo: Enrico Jose Todini

trend-group.com

