

A Tailored To Collection

A complex pattern of bisected circles crafted in vibrant, glowing Jazz Glass. Presented in Light Multi and Dark Multi options.

PICTURED: MOON DARK MULTI

ARTISTICTILE.COM | JULY 2021

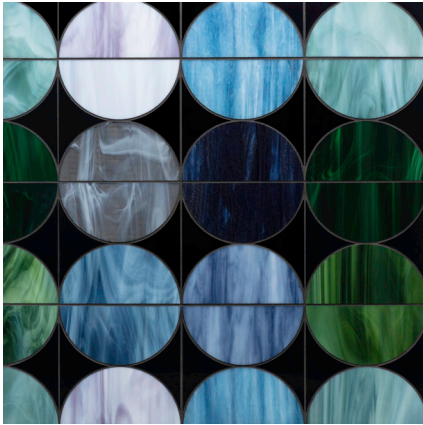
MOON

Made In America | Jazz Club Collection



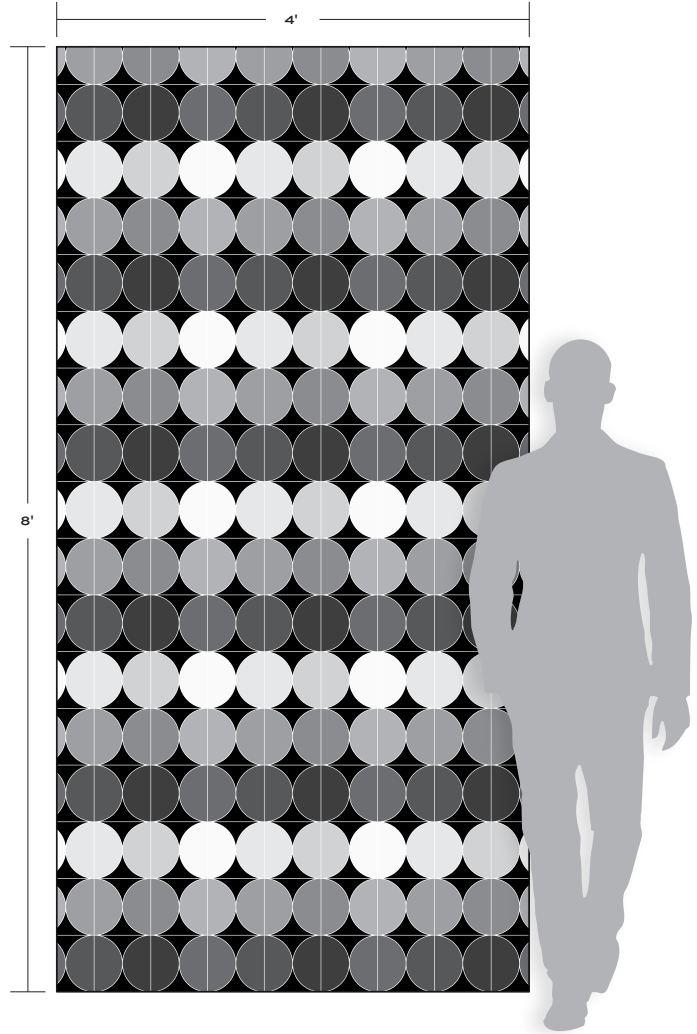
MOON LIGHT MULTI - GLOSS

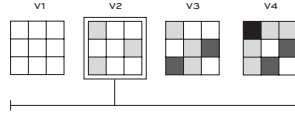
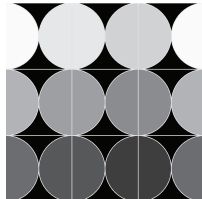
Translucent White, Memphis Blue, Trumpet Turquoise, Light Blue, Dark Green, Birdland Green, Light Green, Bourbon St. Caramel, Stormy Greige, Coltrane Cream



MOON DARK MULTI - MIXED FINISH

Black, Charcoal, Denim Blue, Violet, Midnight Blue, Memphis Blue, Trumpet Turquoise, Malachite, Dark Green, Birdland Green

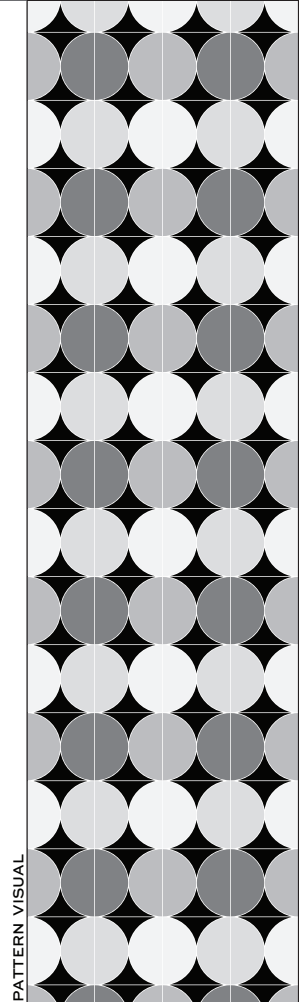
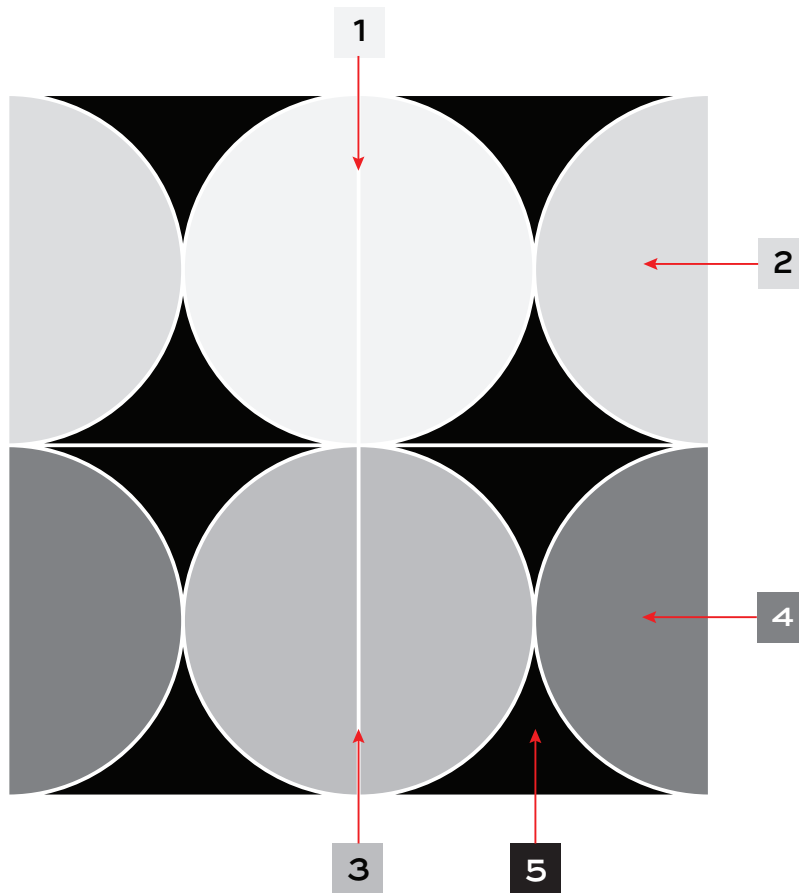


APPLICATIONS									VARIATION	TAILORED TO CUSTOMIZATION	
INTERIOR FLOOR	INTERIOR WALL	SHOWER WALL	SHOWER FLOOR	EXTERIOR FLOOR	EXTERIOR WALL	POOL/ FOUNTAIN	COUNTER TOP	FIREPLACE SURROUND		CARPET CUTTING	
										FIELD	
										FINISH	
										MOSAIC	
										SADDLE	
No	All	Yes, including steam	No	No	Yes	No	No	Yes		VANITY TOP	
										WATERJET	
INSTALLATION/MAINTENANCE										WATERJET MOSAIC	
SETTING MATERIAL	GROUT	GROUT JOINT	MEMBRANE	CAULK	SEALER	CLEANER	INSTALLATION INSTRUCTIONS	LAYOUT	DRY LAYOUT		
Mapei Adesilex P10 with Keraply Additive ¹	Mapei Ultracolor Plus FA ²	As established on sheets	Mapei Mapelastix AquaDefense	Mapei Keracaulk Sanded	Not Required	AquaMix Concentrated	TCNA Handbook	Maintain sheet orientation	Highly Recommended		
NOTES											
¹ Alternate Mortar - Mapei Kerabond with Keralastic Additive or Mapei Granirapid 2-Part System										<p>17 5/16" x 17 5/16" x 1/8"</p> <p>(2.08 sf/unit)</p> <p>Mixed Finish Interlocking Sheet³</p>	
² Alternate Grout - Mapei Keracolor Unsanded or Ardex FG-C Microtec Unsanded											
³ Gloss finish for Light Multi only											

MOON

Made In America | Jazz Club Collection

SINGLE UNIT



ADDITIONAL COLOR POSITIONS REQUIRE CUSTOM QUOTE

MATERIAL KEY

POSITION **1** _____

POSITION **2** _____

POSITION **3** _____

POSITION **4** _____

POSITION **5** _____

DESIGN NAME: MOON 6"

ITEM CODE: CUTMWJMOON6

SHEET COVERAGE AREA: 11-1/2" H x 11-1/2" W

SQUARE FOOTAGE PER SHEET: 0.92 SF

P.O #: _____

SALES ASSOC: _____

FOR VISUALIZATION PURPOSES ONLY.
THIS IS NOT AN INSTALLATION DRAWING.
VERIFY ALL MEASUREMENTS PRIOR TO INSTALLATION.
ALL MATERIALS ARE SUBJECT TO RANGE / VARIATION.
GROUT JOINTS, CENTERING/ORIENTATION MAY VARY
SLIGHTLY FROM DRAWING SHOWN.
ALL CUTS HAVE A VARIANCE OF +/- 1/16".

Client Signature

Date: MM/DD/YY