

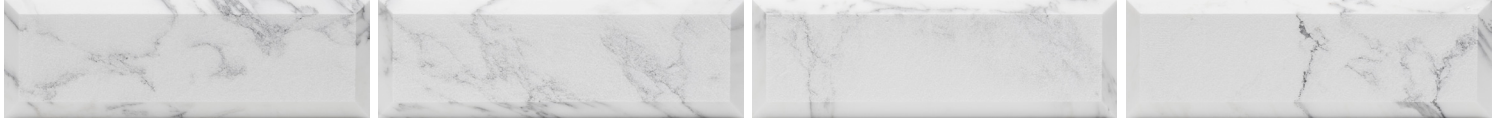
PIQUÉ BEVEL

Piqué, a popular weaving style since the 18th century, adds texture and depth to the surface of a fabric. Piqué Bevel brings that textured aesthetic to our 4" x 12" beveled tiles. Stocked in Arabescato, Balkan Beige, Belgian Bluestone and Grafite stone.

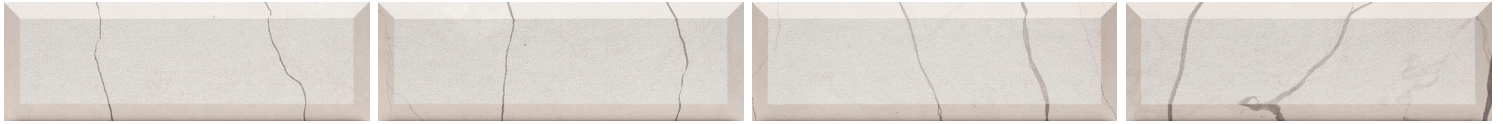


Ceramic Matrix

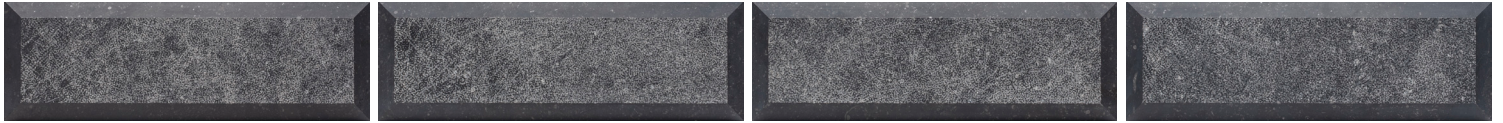
PIQUÉ BEVEL



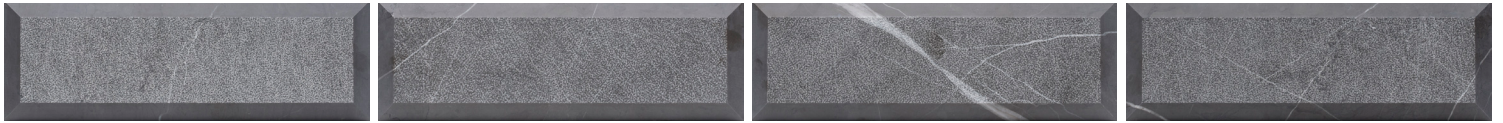
Arabescato



Balkan Beige



Bluestone



Grafite

APPLICATIONS								VARIATION	
INTERIOR FLOOR	INTERIOR WALL	SHOWER WALL	SHOWER FLOOR	EXTERIOR FLOOR	EXTERIOR WALL	POOL / FOUNTAIN	COUNTER TOP		
No	All	Conventional Only	No	No	No	No	No		

INSTALLATION/MAINTENANCE										AVAILABLE SIZES	
SETTING MATERIAL	GROUT	GROUT JOINT	MEMBRANE	CAULK	SEALER	CLEANER	INSTALLATION INSTRUCTIONS	LAYOUT	DRY LAYOUT		
Ardex X4 Stone & Tile ¹	Ardex FL Rapid Set Sanded ²	1/16" minimum	Ardex 8 + 9	Ardex SX	AquaMix Sealer's Choice Gold	AquaMix Concentrated Stone & Tile Cleaner	TCNA Handbook	No	Partial ³		

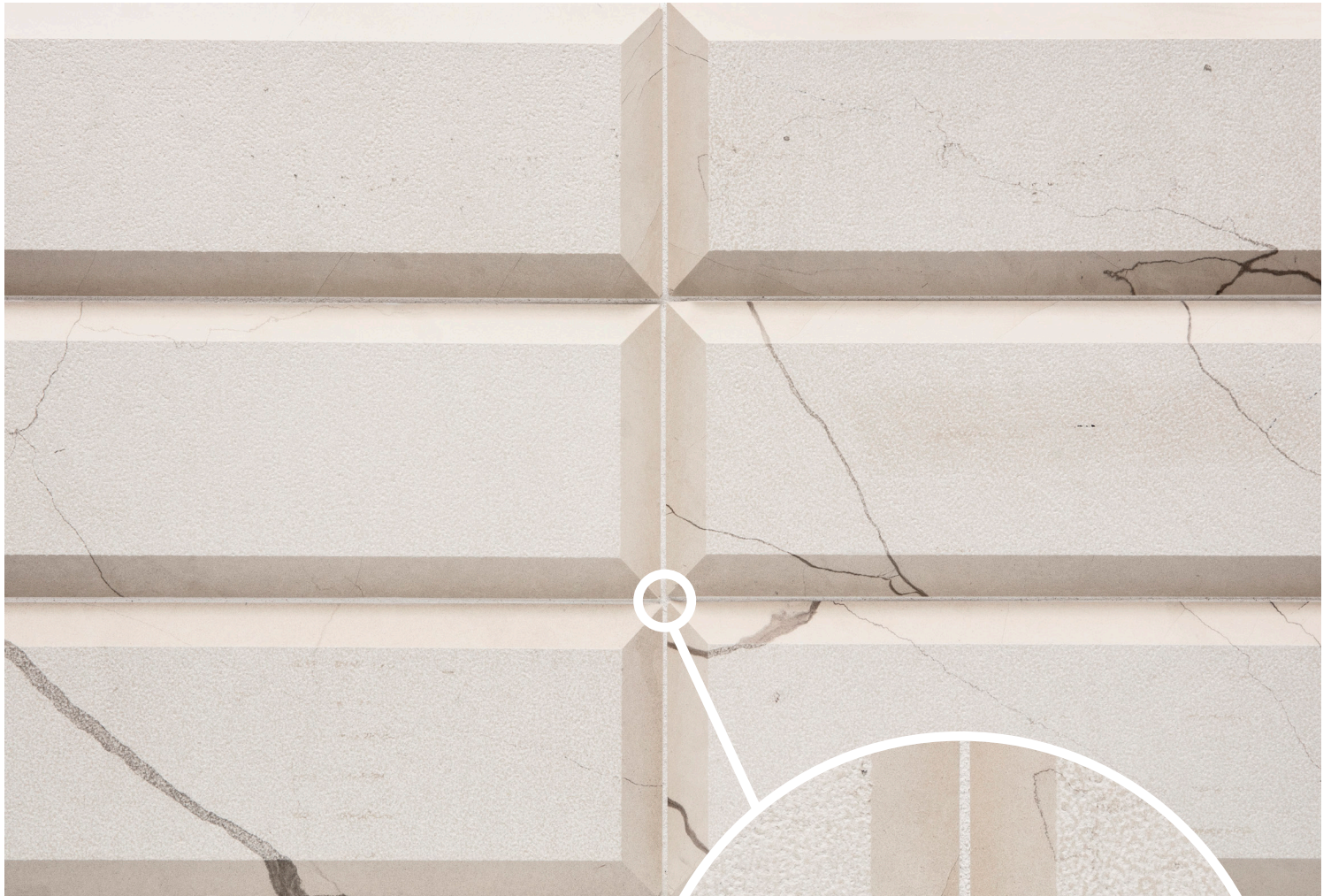
NOTES											
¹ Alternate Mortar - Mapei Kerabond w/Keralastic Additive or Mapei Granirapid 2-Part System - Ardex N23 Microtec Rapid set is recommended for Grafite field tile. ² Alternate Grout - Mapei Ultracolor Plus FA or Mapei Keracolor Sanded ³ Layout for color and vein selection before installation Bag grouting recommended. Tech note: The use of a stone color enhancer, such as AquaMix Stone Enhancer/Sealer, may be desirable to bring out the color of the stone. Test the product for client approval.											

BEVELED DIMENSIONAL FIELD TILE 4" x 12" x 3/16" 3/8" PROJECTION Polished											
---	--	--	--	--	--	--	--	--	--	--	--



Ceramic Matrix

PIQUÉ BEVEL



Pique Bevel is a handmade product.
Beveled edges will exhibit some variation.